

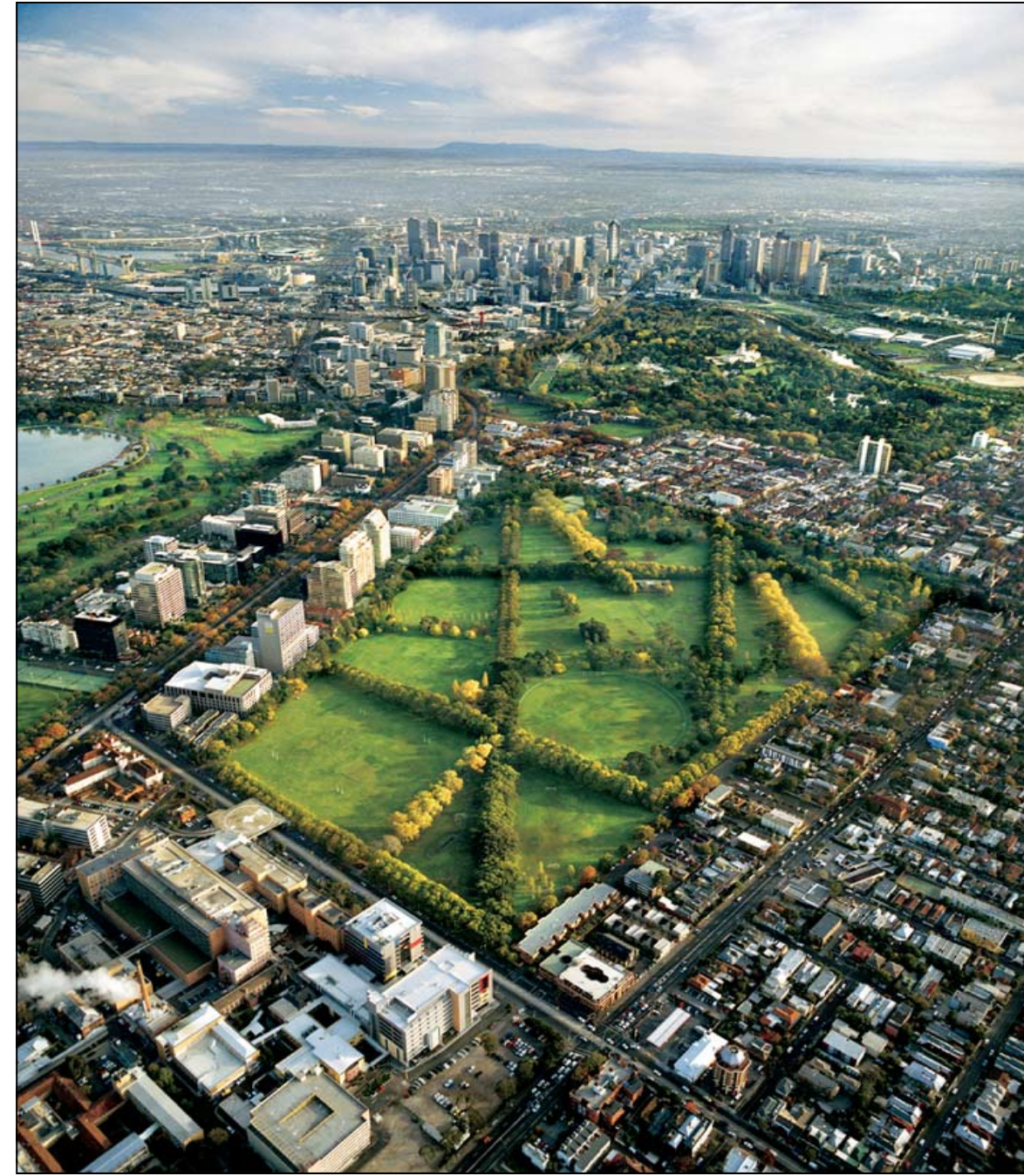
# Park Accessibility Across the Nation

## - The Big Idea -

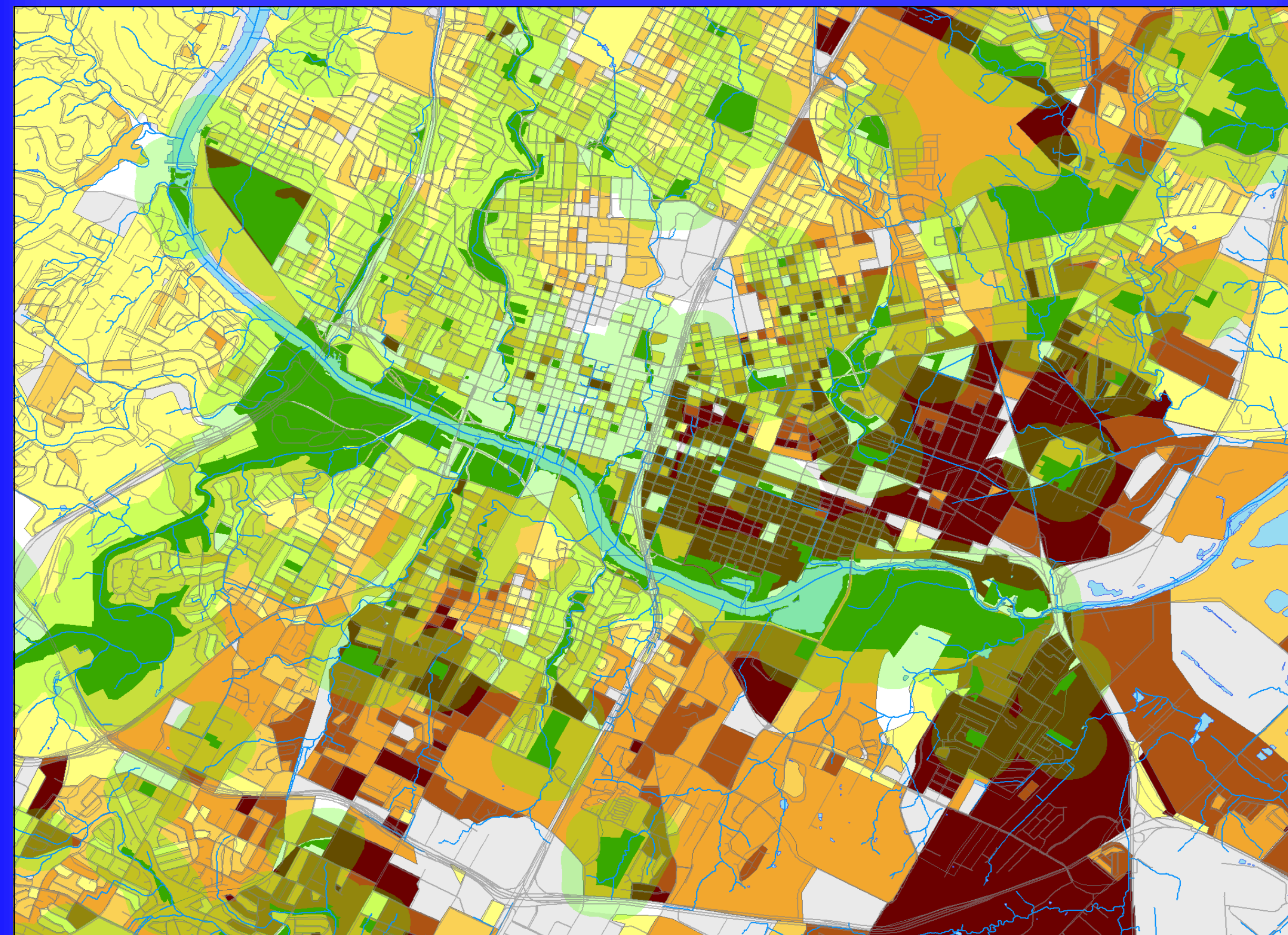
In this project, park accessibility is analyzed using a gap analysis for three different cities. This involves creating a buffer around each park of 1200 feet, represented in both maps for each city. In all of the three maps, people within 1200 feet of a park are considered to have access.

Census blocks are used as well to show percentages of certain prominent demographics in each city. More demographic groups are displayed and represented in each chart.

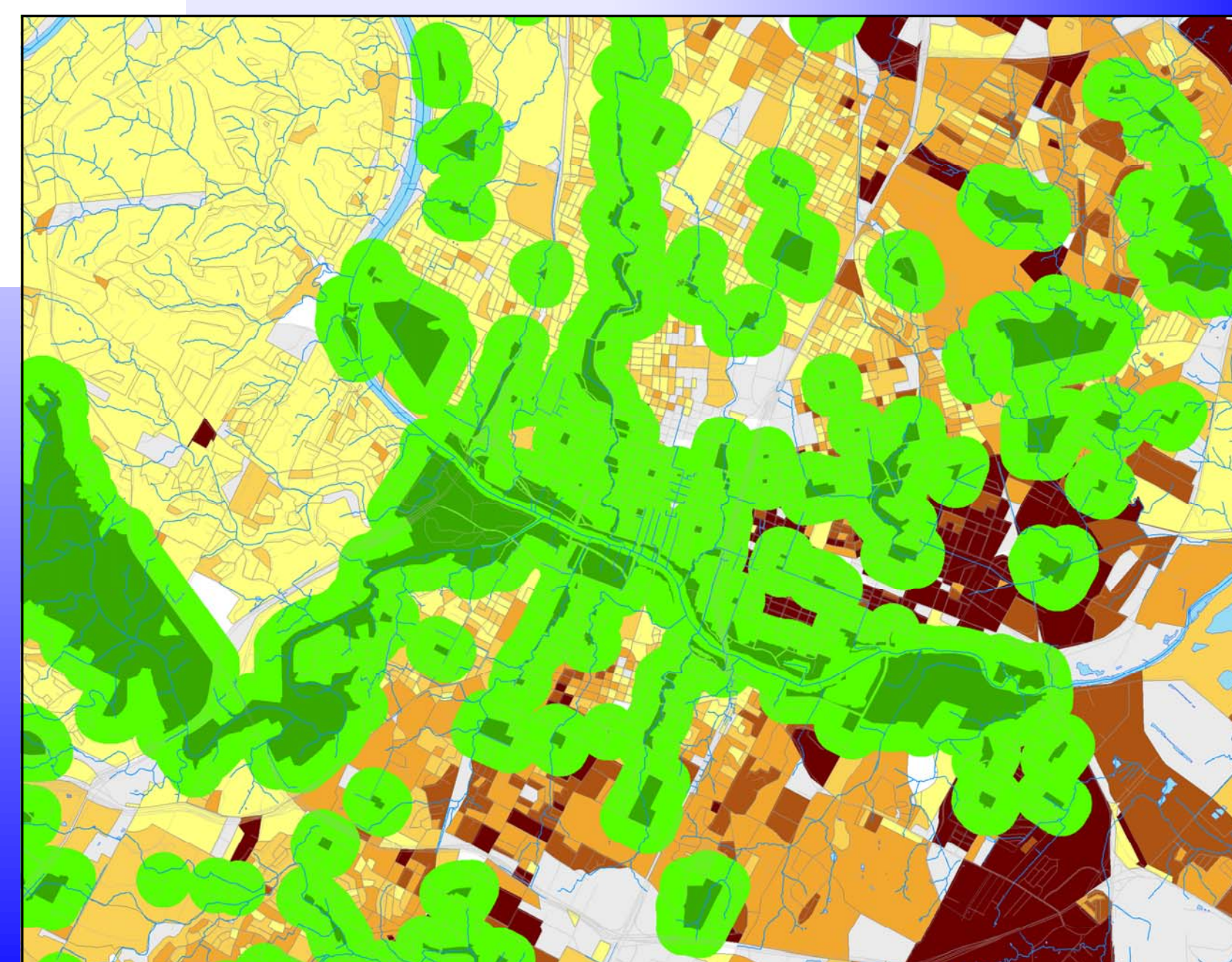
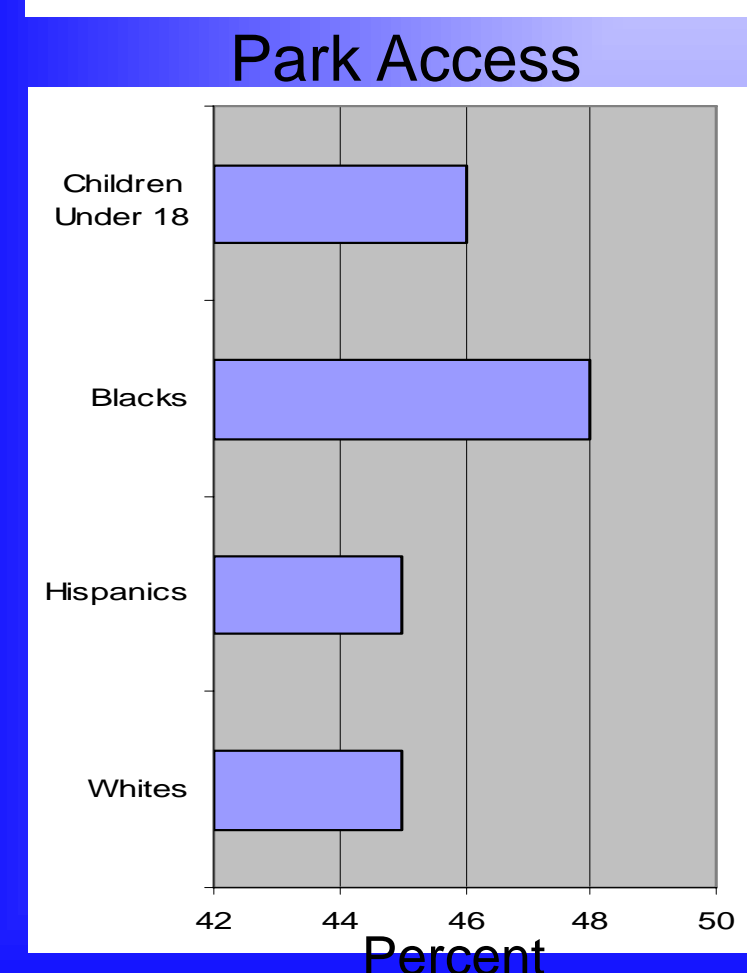
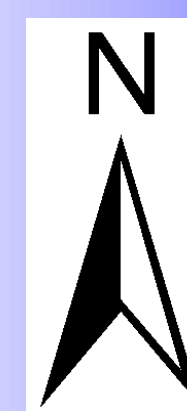
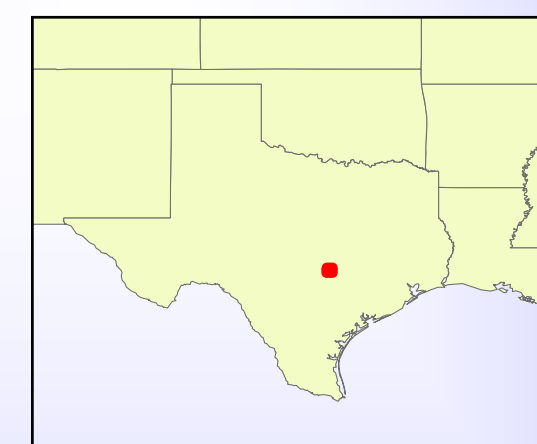
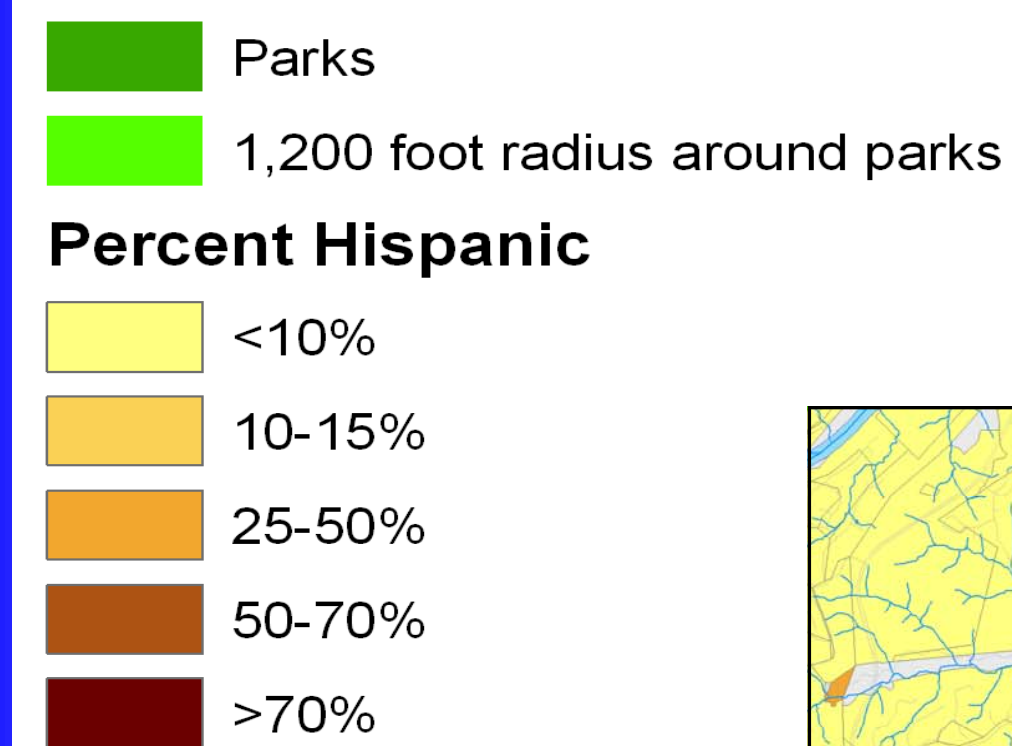
The smaller maps display a basic park gap analysis, and the larger maps show possible disparities in access for the displayed demographic.



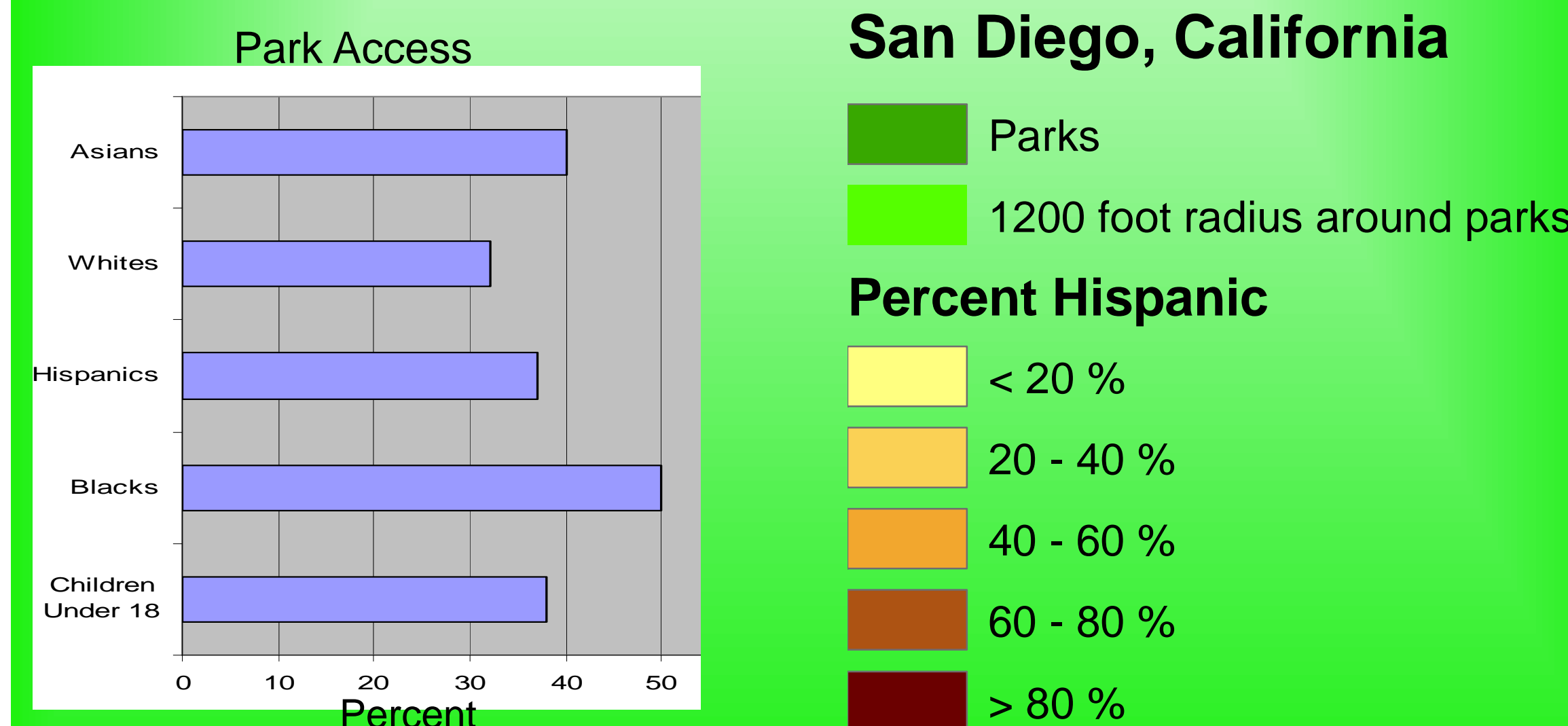
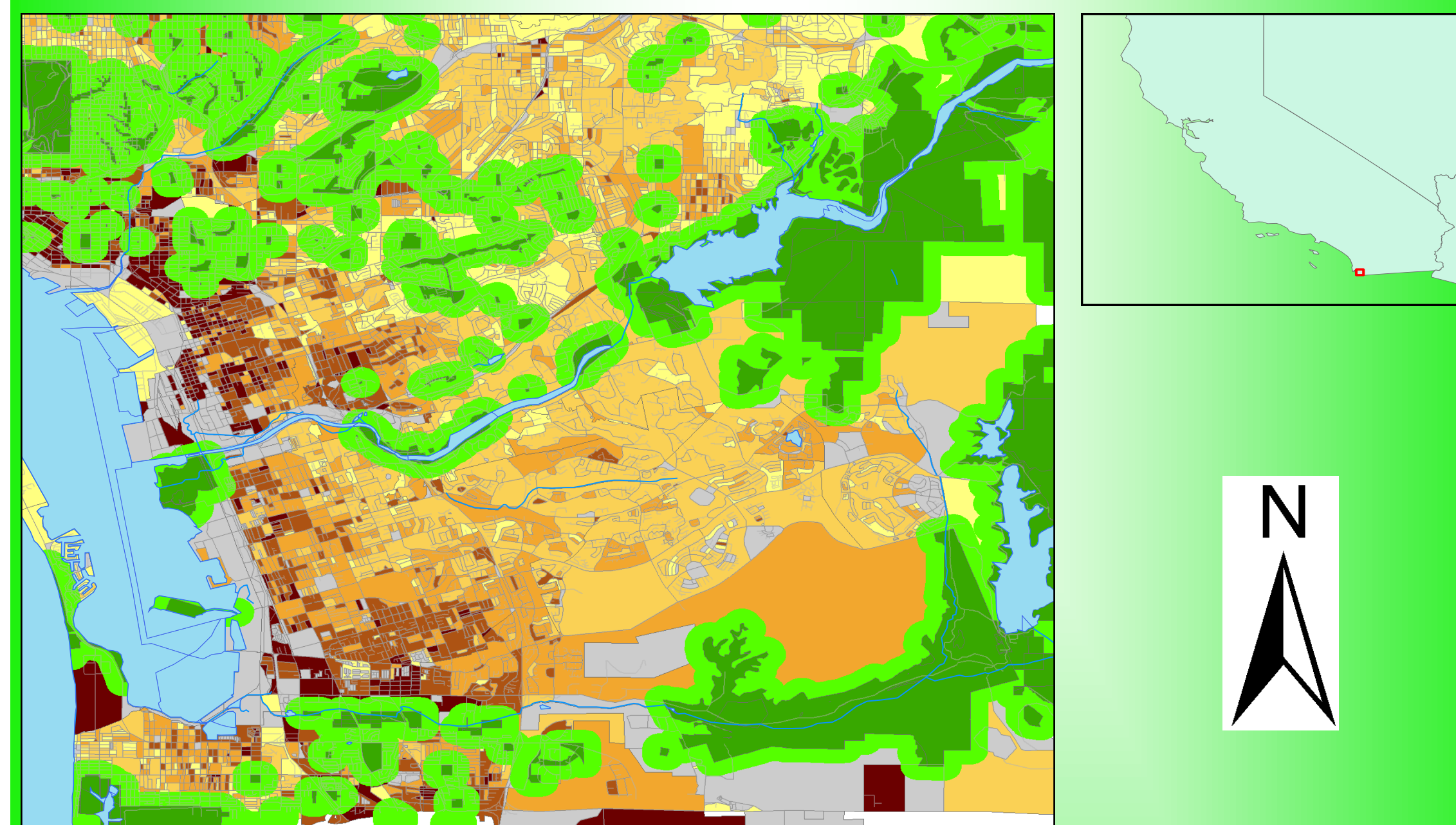
## Austin, TX



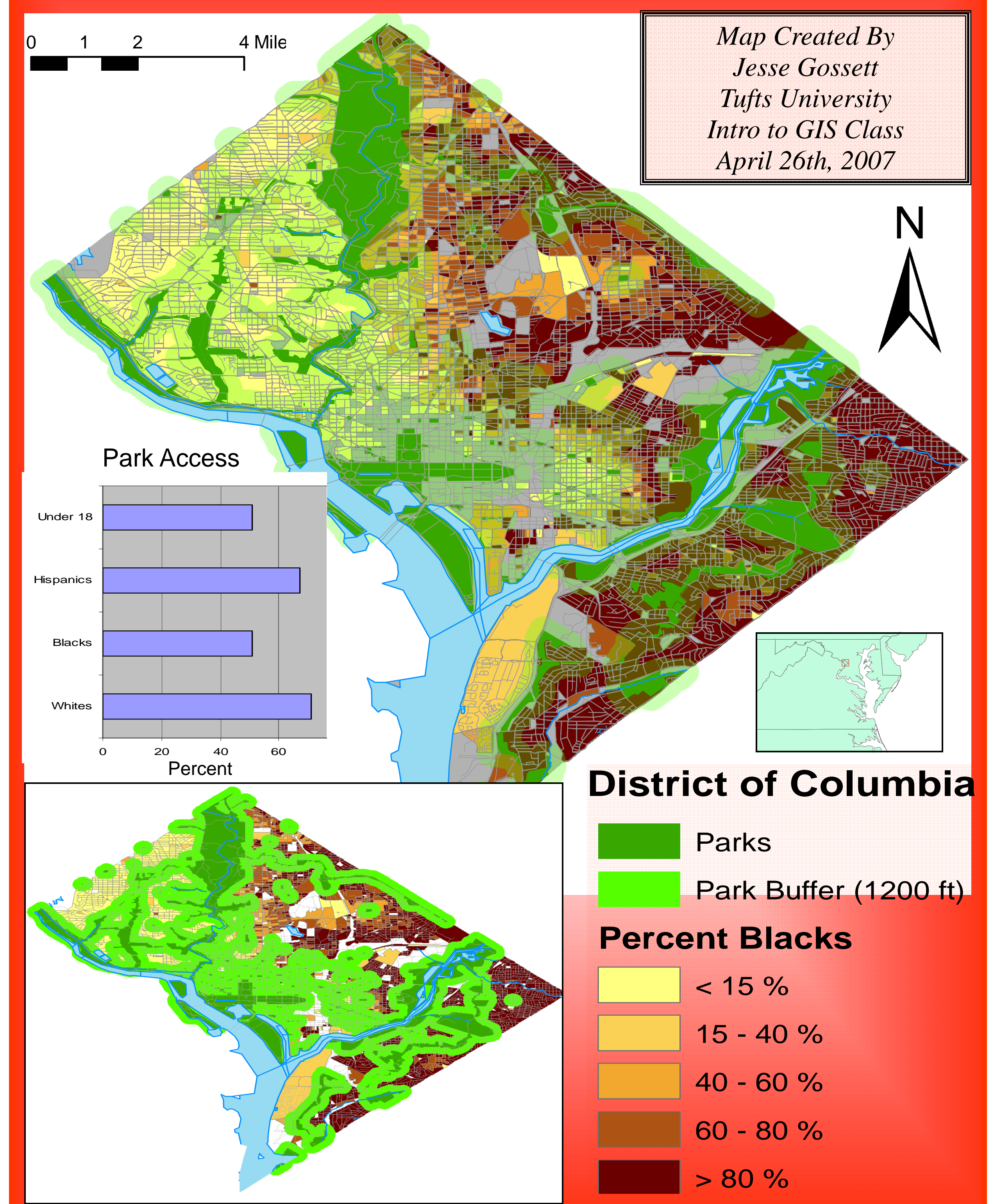
### Austin, Texas



## San Diego, CA



## District of Columbia



## - Conclusion -

When this project began I expected to find disparities between different demographics. In each city there are obvious divisions of where people live. For instance, most blacks live in eastern DC, and most Hispanics live on the east side of the freeway in Austin. However, when the numbers broke down, around 45% of every demographic had access to parks in all the cities. Further conclusions can be extrapolated at the discretion of the viewer.

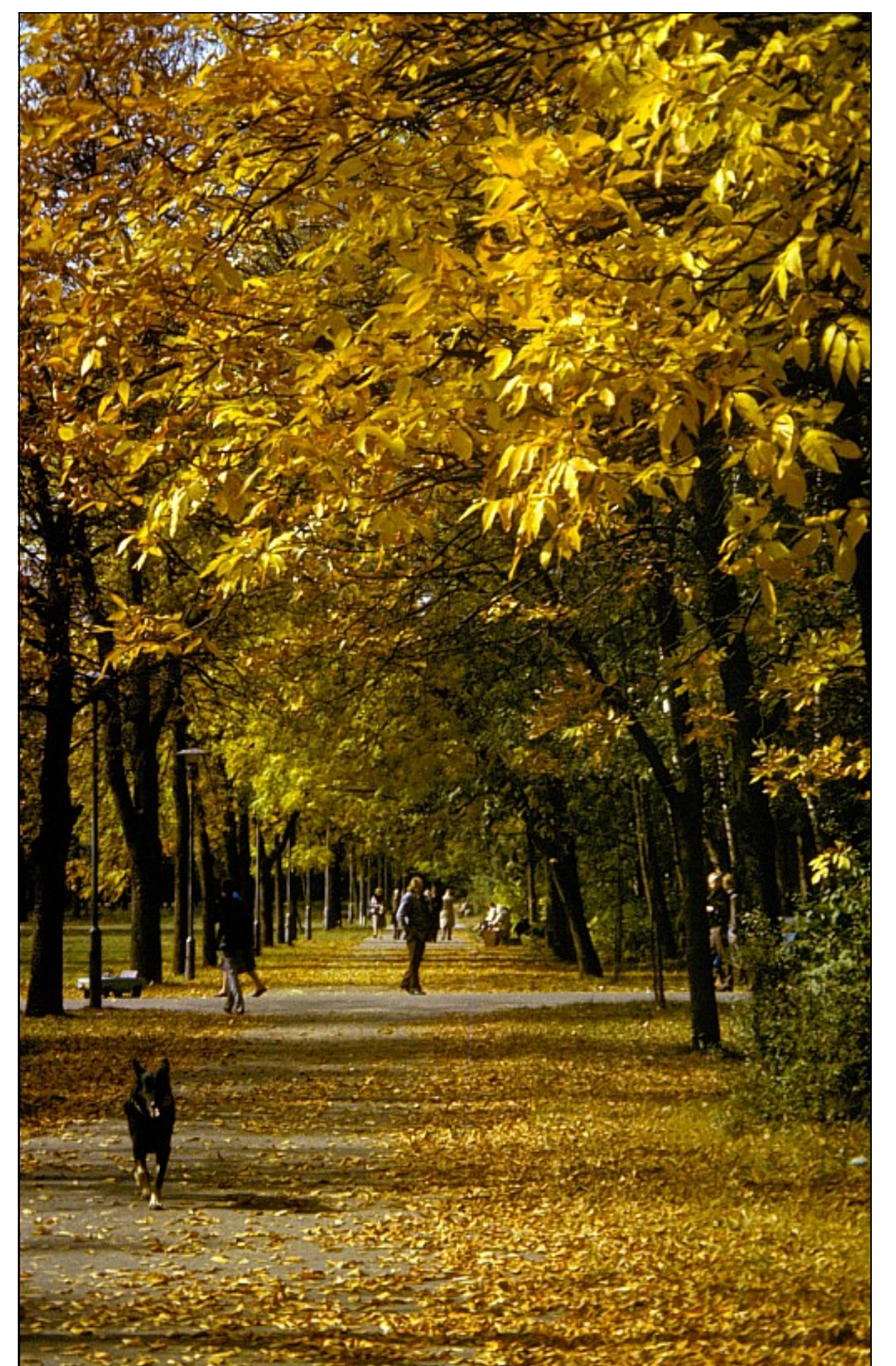
### Data Sources

All Census Data  
ESRI Geography Network

Austin Maps  
Geographic Data from City of Austin

San Diego Maps  
Geography Data from SanGIS

District of Columbia Maps  
Geography Data from DCGIS





San diego - West coast is much more a car-friendly place, what with more room and the belief that space is good (the move to the suburbs). We see this in the map because there is just so much more space in san diego than DC. The parks are much bigger and further in between. One way in which you can see a discrepancy however is in the size of the census blocks. The small ones all have more Hispanics, denoting higher density population, while the other areas tend to be outside the downtown and have more space. Who needs a park with a swing set when you have 20 acres behind your house?