

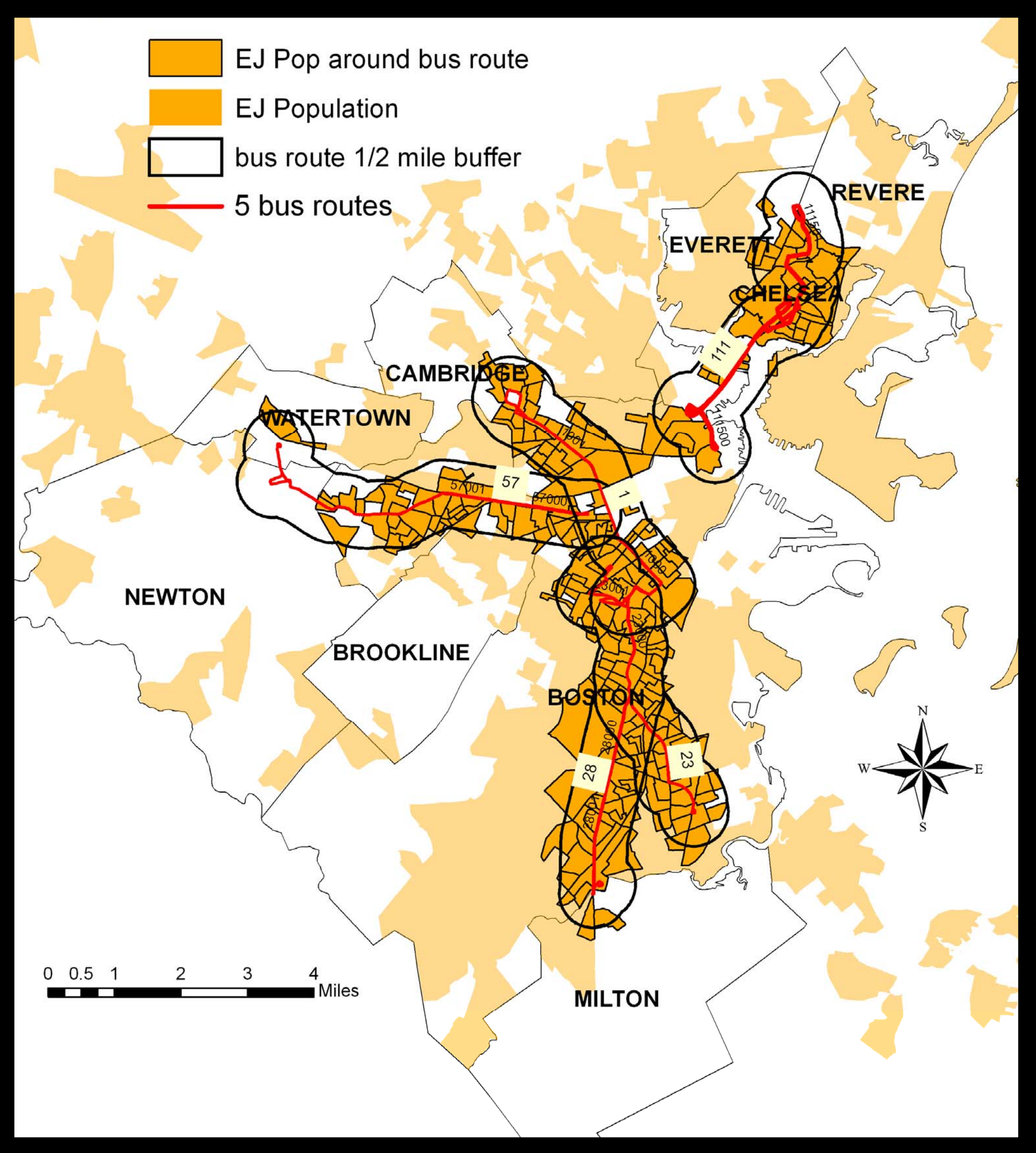
Metro Boston's Environmental Justice Communities around Five Key MBTA Bus Routes

ABSTRACT

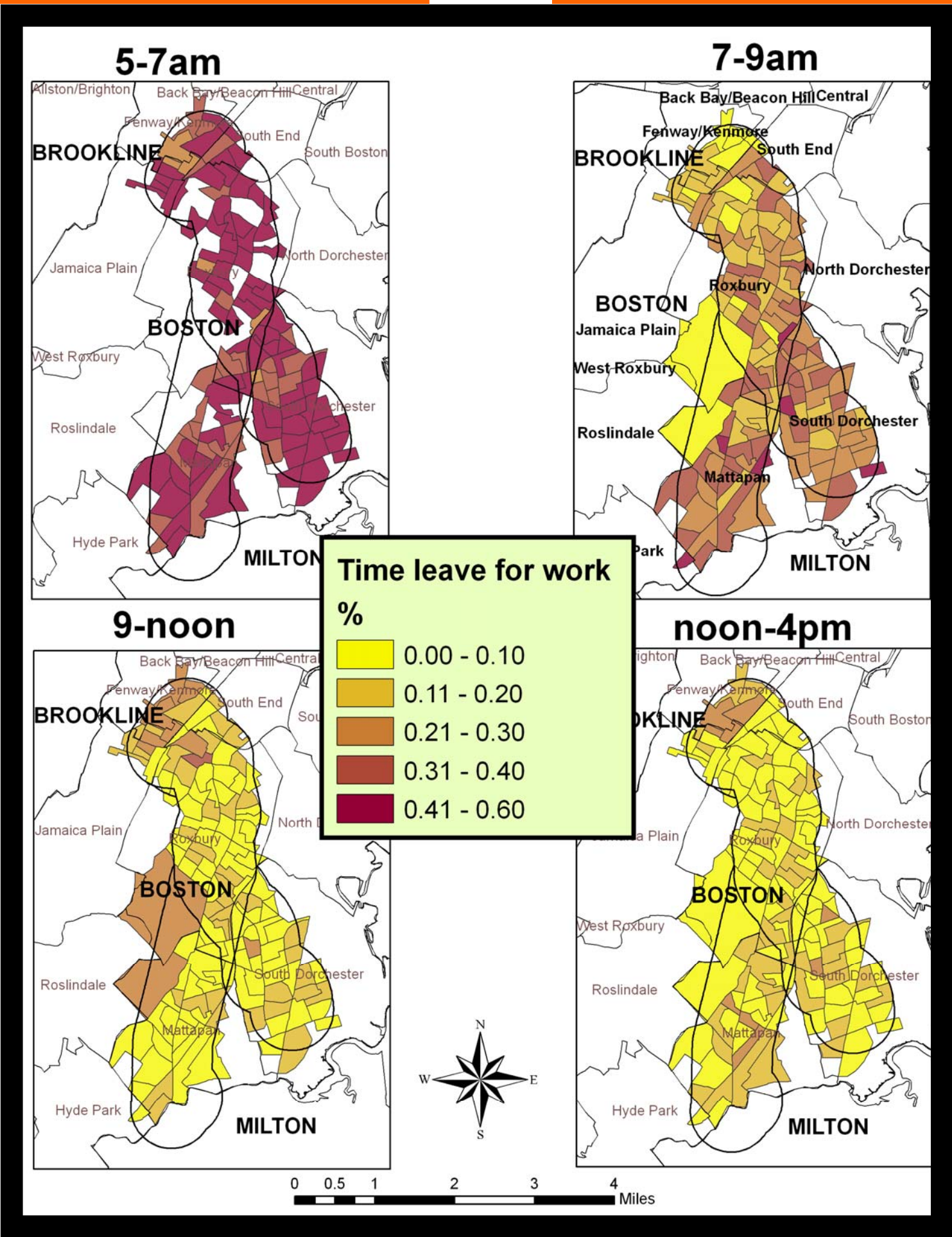
This poster illustrates five Boston bus routes with high ridership levels, and their surrounding Environmental Justice communities (by Census Block group). Environmental Justice communities are characterized by high percent minority, low income, high percent foreign-born residents, or linguistic isolation.


Each of the five routes have been evaluated and assigned a report card by the UEP Field Project Team #2 for service standards. None of the bus routes scored higher than a C. One proposed solution to improve bus transit service in Boston is a Rapid Bus Transit infrastructure. The take-home message is that the MBTA needs to match bus service with the unique needs of the communities they are serving.

EJ Populations within 1/2 mile of 5 key bus routes




Journey to work: the importance of knowing bus demand throughout the day: Routes 23 and 28

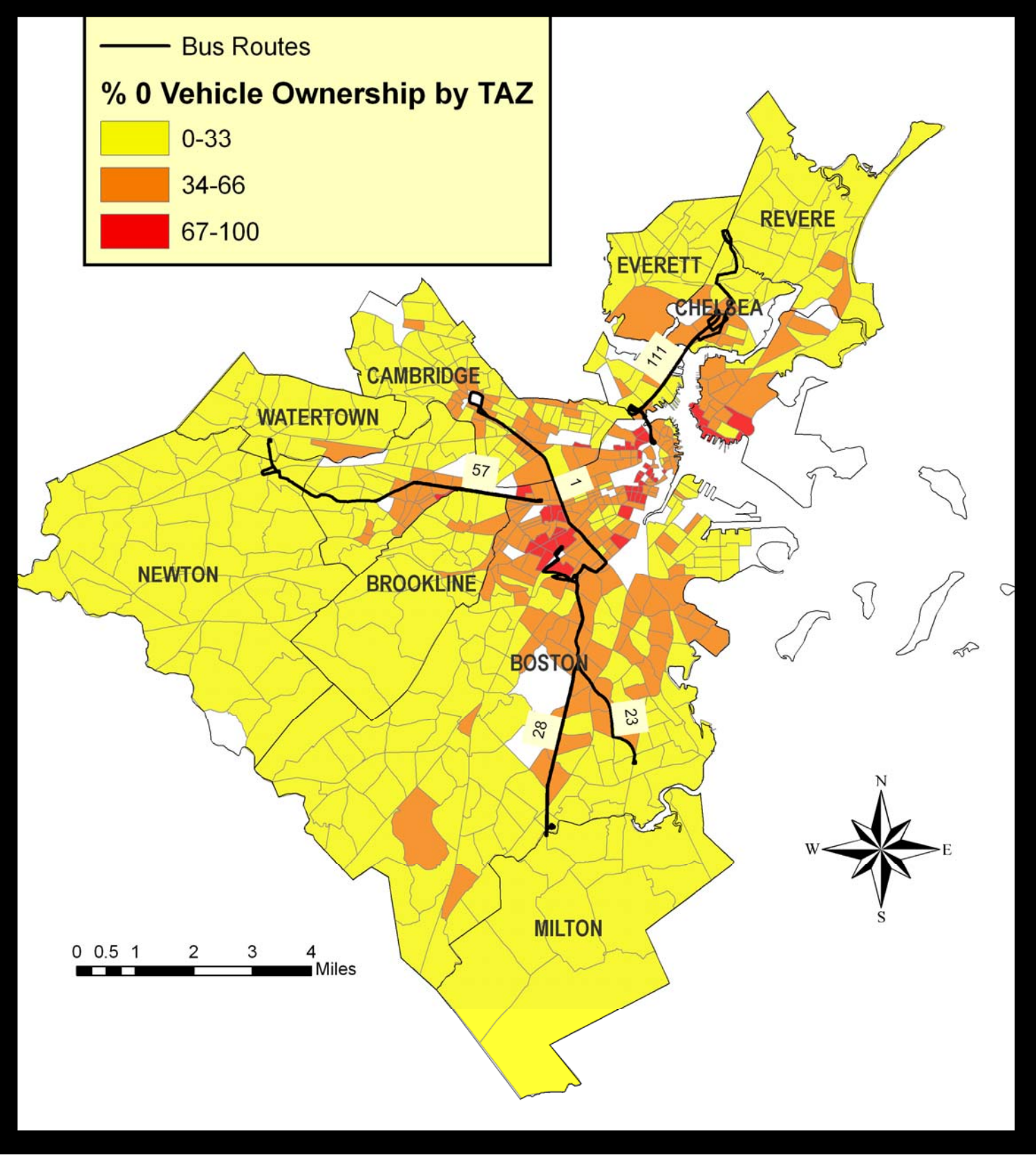




Cartographer: Hedda Steinhoff
April 2007
Data Sources:
Tufts UEP Team #2 Field Project:
Making the Grade:
A Performance Analysis of Five Key Bus Routes
in the Greater Boston Area
By Kari Hewitt, Courtney Knapp, Jason Kurian, and Kara Sergeant

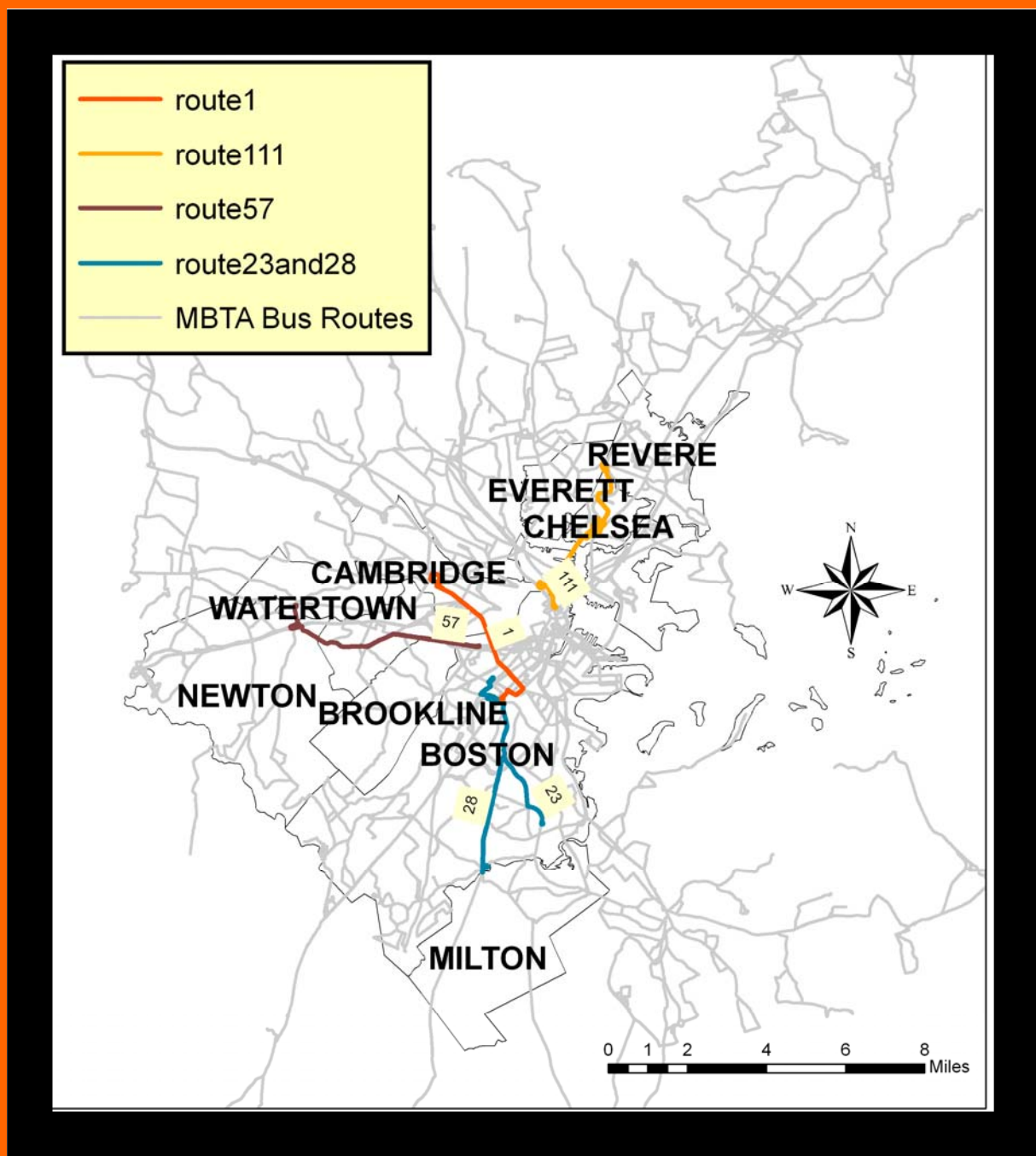


Transit dependency



5 Key Bus Routes:

- Route 1: Roxbury, the South End, Back Bay, Cambridge
- Routes 23 and 28: Dorchester and Roxbury
- Route 57: Watertown, Brighton, Allston, and Kenmore Square
- Route 111: Chelsea and Charlestown



Individual route analysis: EJ Community Profile by block group within 1/2 mile of key bus routes, and corresponding Service Report Cards

