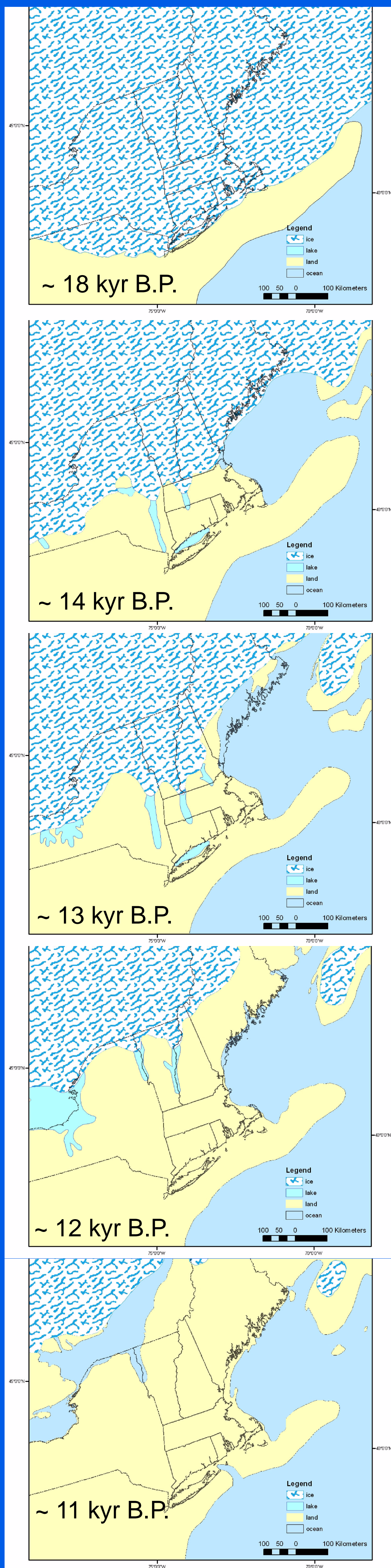
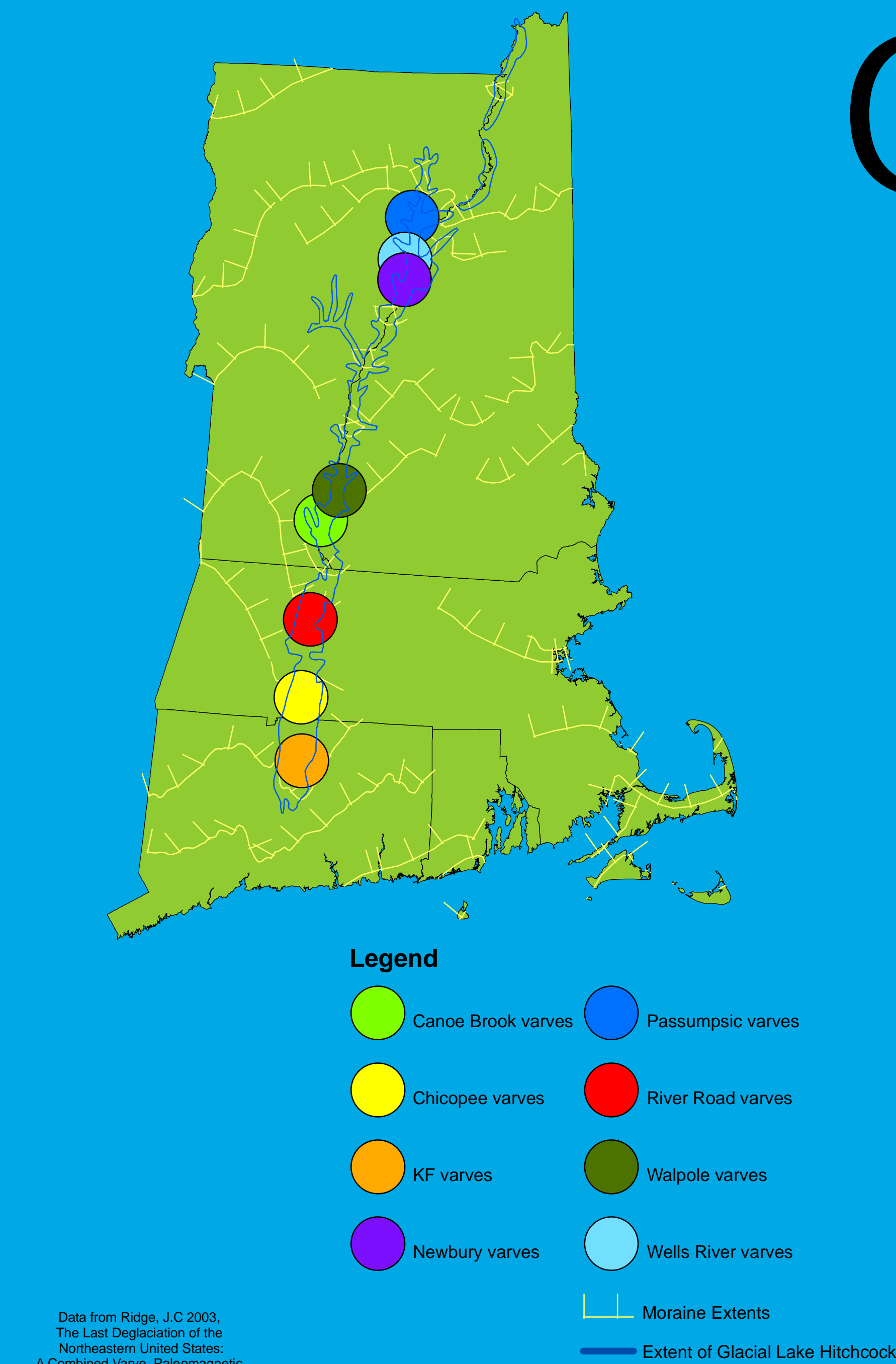


Relationship of Ice Margins and Fish Recolonization in the Connecticut River Valley During the Last Deglaciation

Inferred Pattern of Deglaciation Over the Past 18 kyr

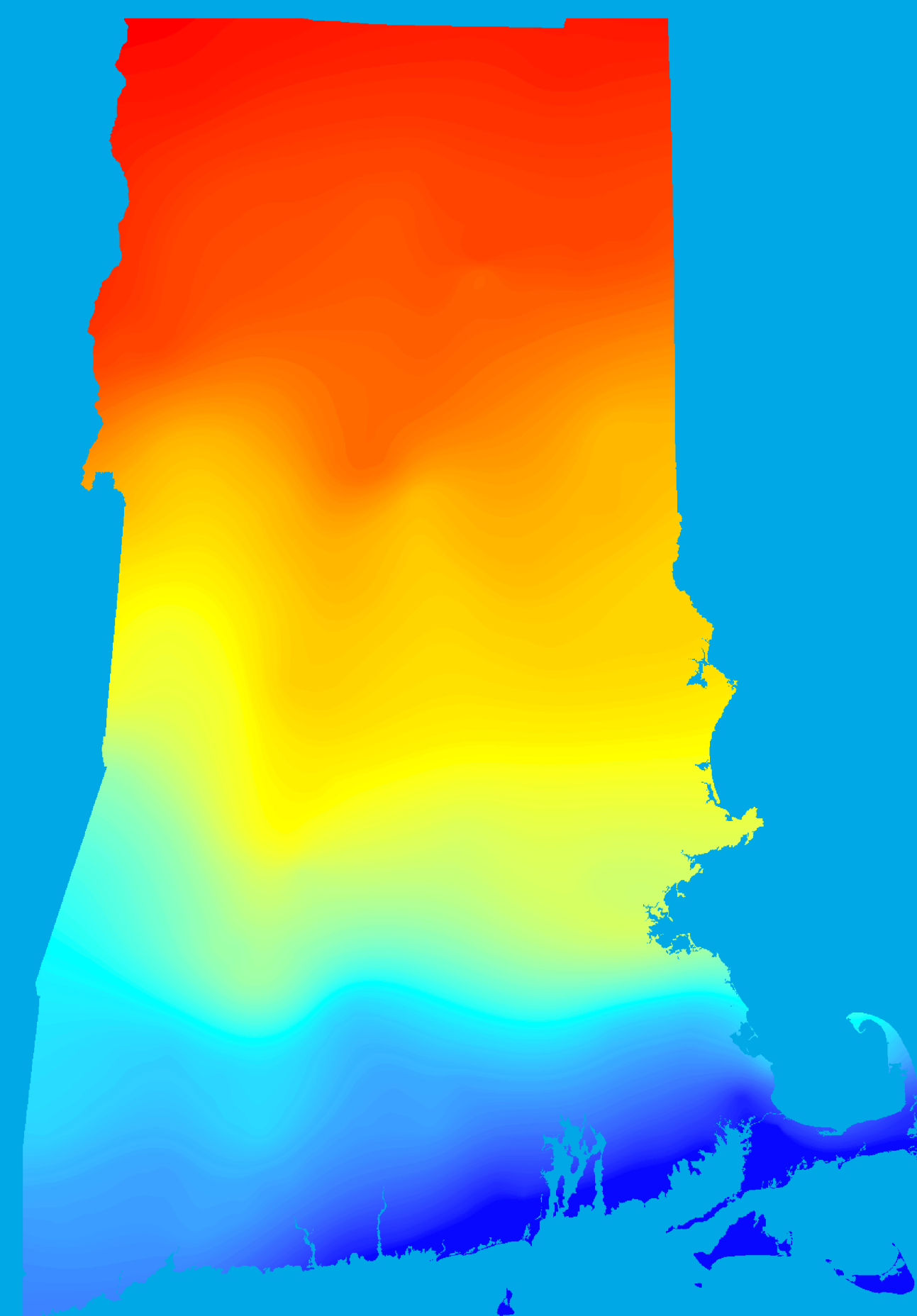


Data compiled from:
Dyke, A.S., Giroux, D. and Robertson, L., 2004.
Paleovegetation maps of Northern North America,
18,000 to 1,000 BP, GSC Open File Report 4682.
ESRI Data and Maps, 1999, Environmental
Systems Research Institute, Inc.



Data from Ridge, J.C. 2003,
The Last Deglaciation of the
Northeastern United States:
A Combined Varve, Paleomagnetic,
and Calibrated ^{14}C Chronology.

O



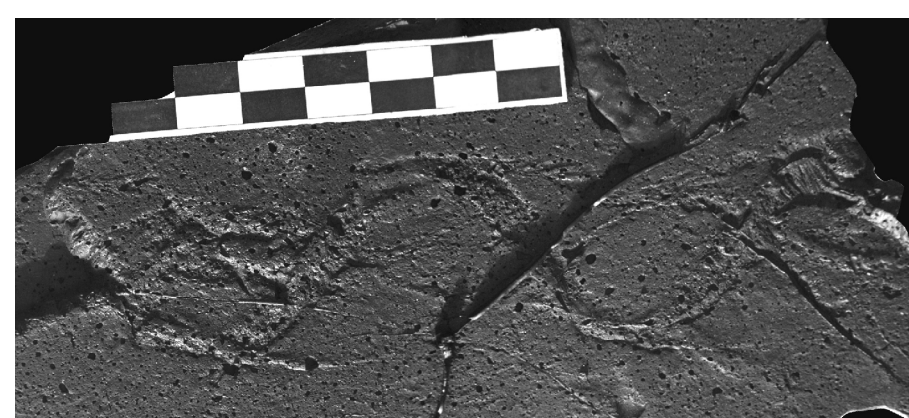
U. simplicitas

U. simplicitas comprises two sets of paired waves and an unpaired wave.



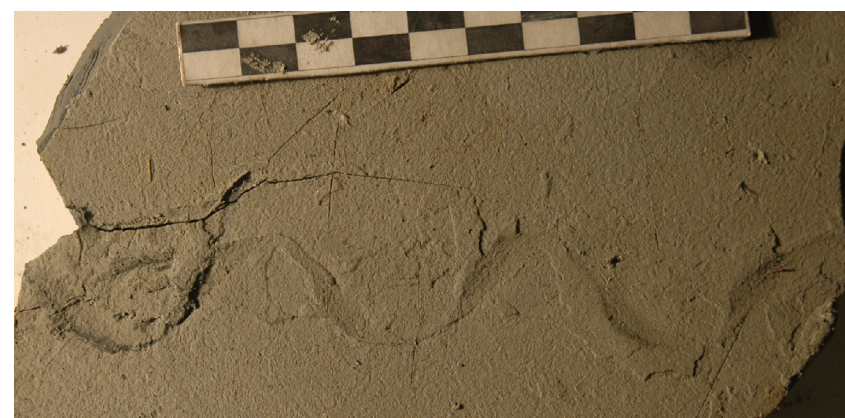
U. britannica

Trails comprising two, out-of-phase, intertwined waves, one of which has a greater amplitude than the other. A pair of outer parallel waves of lower amplitude may also be present.



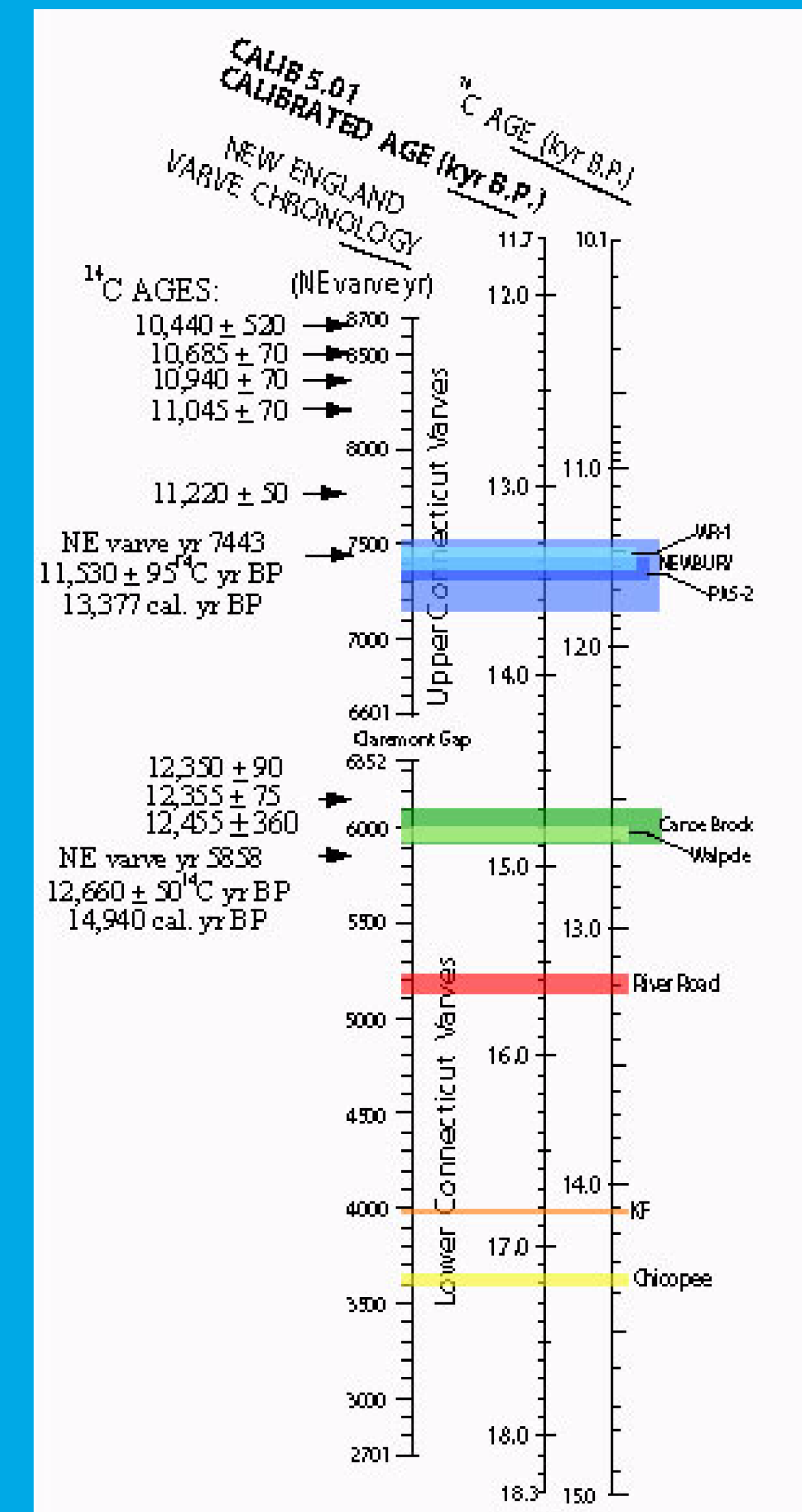
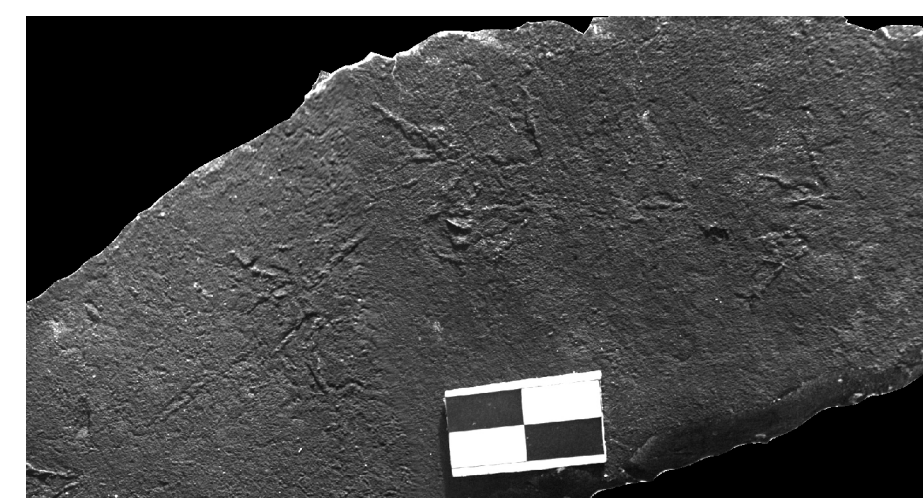
U. unisulca

U. unisulca is the simplest ichnospecies of *Undichna*, comprising a single sinusoidal wave.



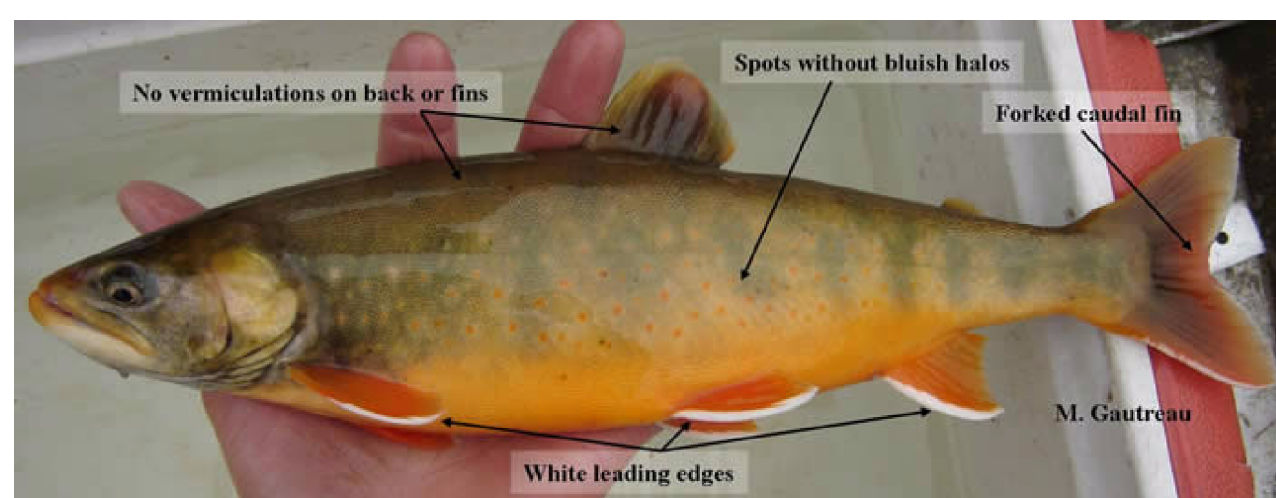
Broomichnium

A bilaterally symmetrical trace composed of two pairs of linear or curvilinear imprints diverging to the posterior and occasionally, a longer median imprint at the posterior.



Images from Maine Department
of Fisheries and Wildlife

©Shedd Aquarium



M. Gauthier

Author: Richard J. Torres 2007