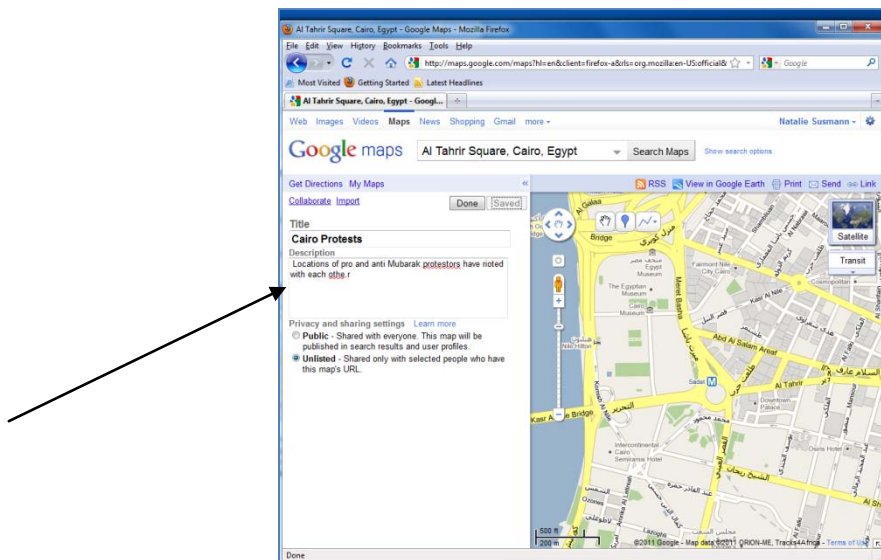


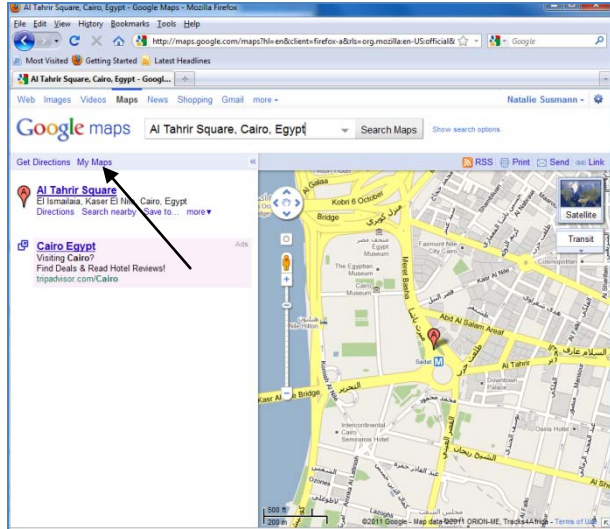
Tufts Google Maps Mashups Tutorial – Egypt, 3/16/2011

CREATE YOUR MAP

1. Create a Google account (or sign into Google if you already have one) via <https://www.google.com/accounts/NewAccount?continue=http%3A%2F%2Fmaps.google.com%2F%3Fie%3DUTF8%26ll%3D37.0625%2C-95.677068%26spn%3D47.167389%2C79.013672%26z%3D4&hl=en&service=local>
2. Go to <http://maps.google.com/>
3. Click on **My Maps** on the top left-hand corner.
4. Click **Get Started**. You may be asked to sign in again.
5. Title your map: Cairo Protests
6. Enter a description: (example) Locations of pro and anti Mubarak protestors have rioted with each other.
7. Click “Unlisted” in the section below the Description box. This will make your map private unless you choose to share the URL. Save your map.



8. We will now zoom into the area of focus. Type “Al Tahrir Square, Cairo, Egypt” into the search dialogue box (you may click on the autosearch if it comes up). The map will zoom to this area. You will notice that the left-hand side of the screen will no longer show your map information. To retrieve this, click the **My Maps** button.

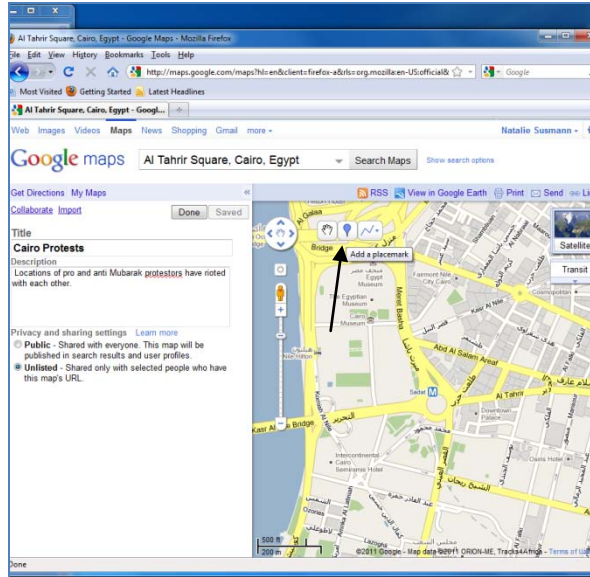


A list of all of the maps you have created under your Google account will be listed. Select your Cairo map.

9. On the map portion of the screen, you will see a small box called “Satellite”. Click it. This gives you the option to view the map via Satellite view. Clicking this once will not only change the screen, but then also create two more boxes: Earth and Map. Click Map to bring the map back to the original view.

ADDING PLACEMARKS

10. First, get accustomed to navigating in Google Maps if you are not already. Try zooming in and out with the plus and minus buttons. Additionally, the hand will allow you to pan, or essentially grab the map and move it to a different area.
11. We will now add placemarks to mark locations that were significant during the Cairo protests. Click the **Add Placemark** tool on the map.



Your mouse now turns into a blue marker. Place the marker Tahrir Square.

12. After placing the location, a box appears. Fill in the relevant information.

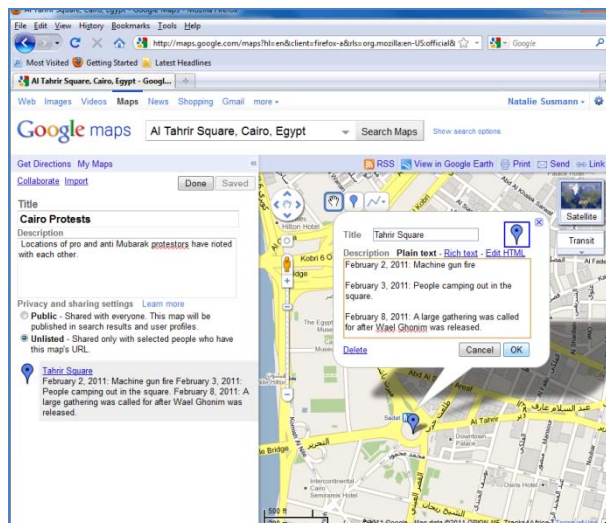
Title: Tahrir Square

Description:

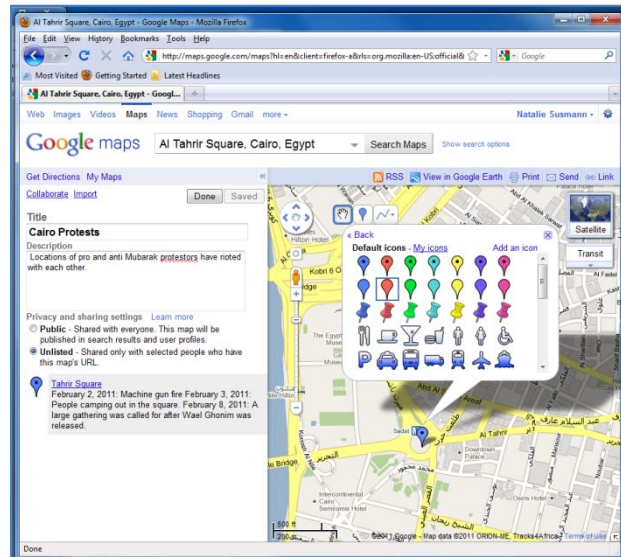
February 2, 2011: Machine gun fire

February 3, 2011: People camping out in the square.

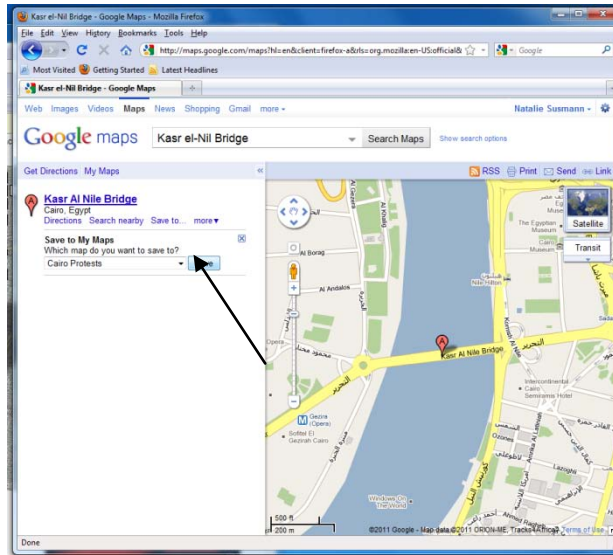
February 8, 2011: A large gathering was called for after Wael Ghonim was released.



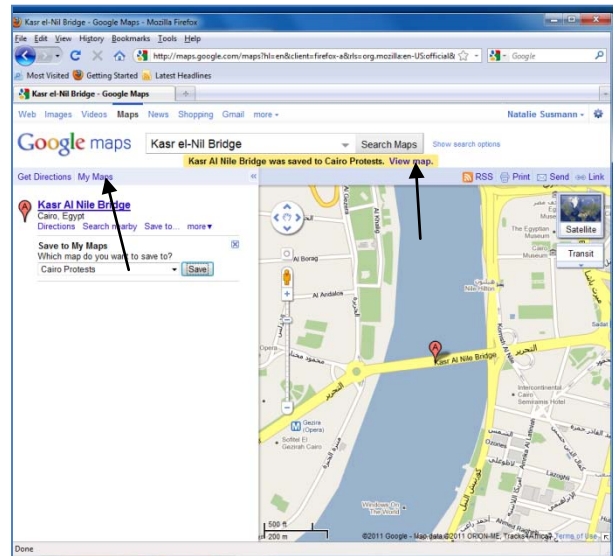
13. In the same box, you can change symbology information (ie color and shape of your symbols). It would be helpful in this map to distinguish different types of locations (ie battles, meeting places, etc.). Click on the blue marker. Select the solid red marker option.



14. If you select the “Rich Text” option, you are able to change the color, font, and size of the text. Try changing the font. Click OK when finished.
15. Now, on the left of your screen, you will see your map information as before, but the Tahrir Square placemaker has been added.
16. Now we will edit a placemaker already located in Google Maps. Type “Kasr el-Nil Bridge”. The map view will move west to the bridge, and you will see a placemaker already there. The left side of the screen will also have the placemaker listed “Kasr Al Nile Bridge”. Under this listing, **click Save to...** A dropdown menu appears. Save the location to the Cairo map. Click Save.



Navigate back to your map by either selecting **My Maps** on the left hand side of the screen, or by selecting the **View Map** option prompted by Google Maps.

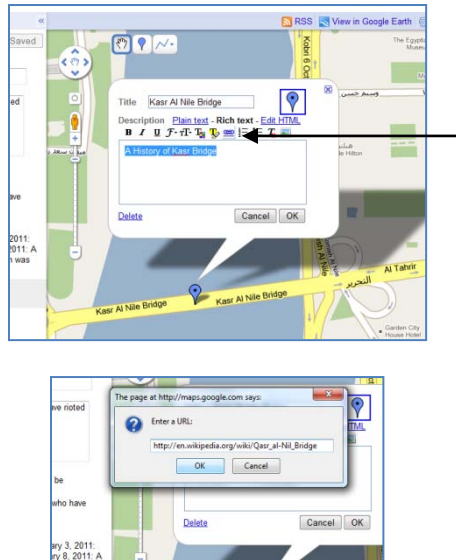


17. Kasr el-Nil Bridge is now listed on your map. Click on the link. A dialogue box appears, same as the one for Tahrir Square. Select everything in the box and delete it.

Adding a Link to your Placemarks

18. For a placemark you would like to add substantial amounts of text to, it is best to add a link. This way, you can point your audience to a large body of information. In the **Description** box of the Dorchester Heights point, type in the phrase "A history of Kasr Bridge." Click the **Rich Text option**. Select your text in the description box. Then, click the **Add Link** option.

http://en.wikipedia.org/wiki/Qasr_al-Nil_Bridge as your link (or Google “Kasr Al Nile Bridge”, select any website of interest, and copy and paste the URL). Click OK.



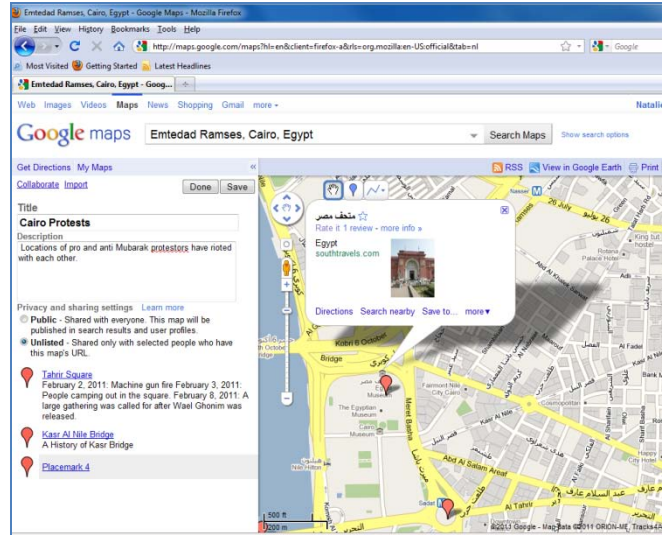
“A History of Kasr bridge” text should now turn a different color, indicating that it is a link.

Note: You may enter multiple links per marker; perhaps you would offer a variety of links divided by category.

19. Change the color and design of the marker to match the Tahrir square marker (we selected the solid red marker for protests). Click OK.

Adding Lines

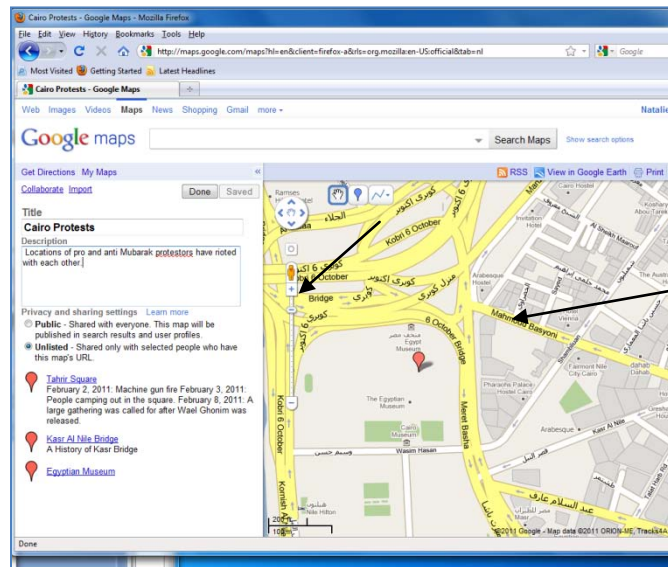
20. Adding lines to your map can be quite helpful. We will be adding a line to trace barricaded areas during the protests. Pan your map to the north of the square, to the Egyptian Museum. Add a Placemark here.



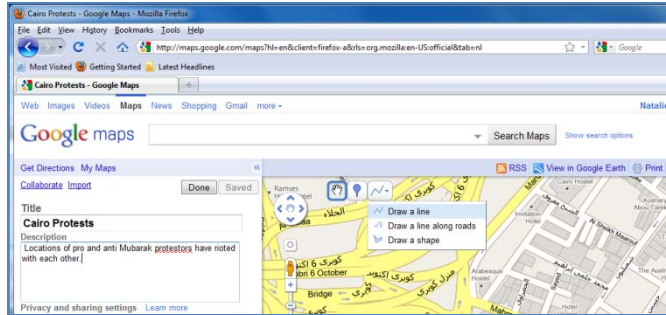
Name this placemaker the Egyptian Museum. Add a link to the placemaker describing some of the items that were damaged in the protests:

<http://www.telegraph.co.uk/news/worldnews/africaandindianocean/egypt/8291526/Egypt-crisis-Looters-destroy-mummies-in-Cairo-museum.html>

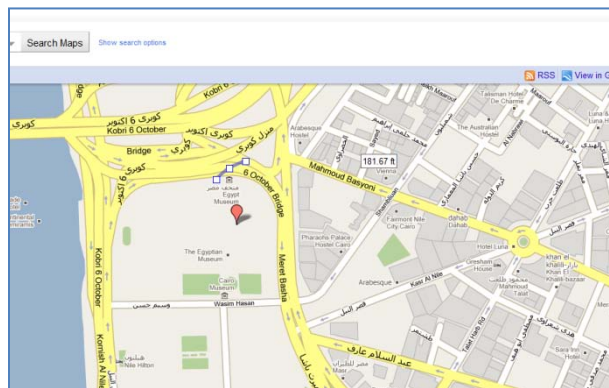
21. Zoom into the Egyptian Museum area on your map so that you can see Mahmoud Basyoni street.



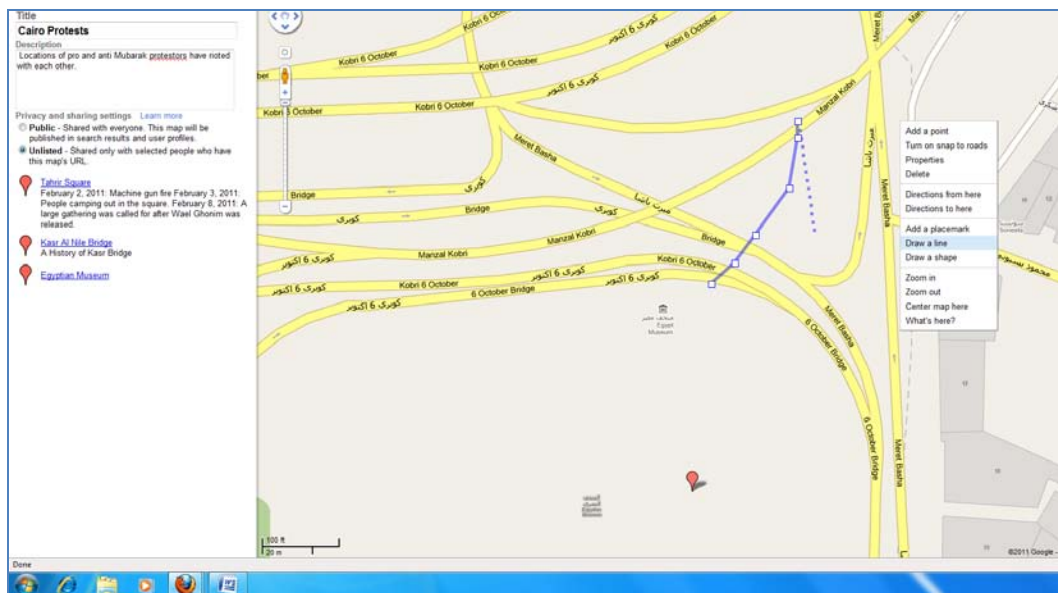
22. Click the **Draw a Line** feature and hold the button down. Select **Draw a Line**.



23. The protestors blocked access from the bridge to the square. Click once on the street in front of the Egyptian Museum. You will see a small square placed on that spot. Your mouse will extend with a blue line. Keep clicking to make a path that follows Meret Basha road, to Manzal Kobri road.

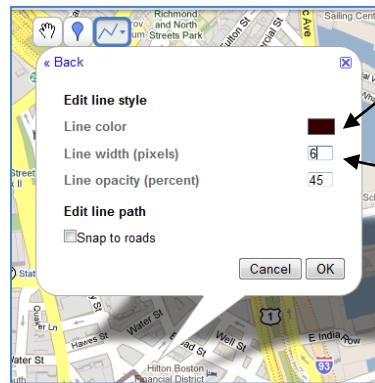


24. When you reach the end of the path, right click, and select **Draw a Line**.



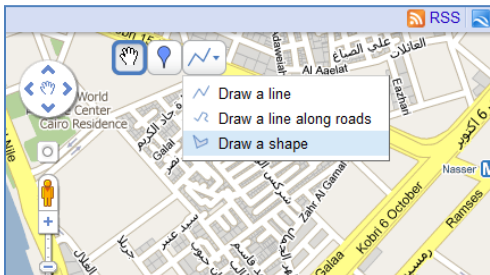
25. A dialogue box now appears, similar to those for the markers. Enter “Anti Government Barricade” for the title.

26. Change the color of the roads, as well as the thickness. To do so, click the blue line on the dialogue box. Click the box with the color, and select brown from the pop up menu. Change the thickness to 6.



DRAWING A SHAPE

27. We will now draw a polygon around the highway intersections, where supports of Mubarak were concentrated. On the top of the screen, from the same toolbox that you added a line and a place marker, select the **Add Line feature and hold down. Choose Draw Shape.**

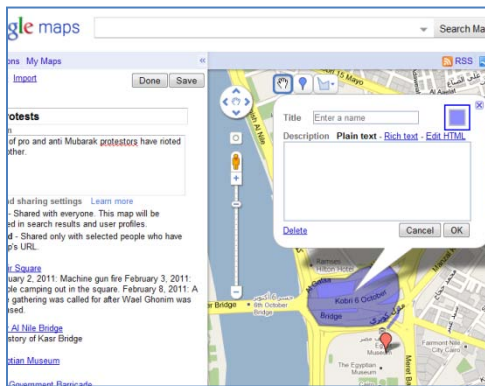


28. Same as the draw line feature, click once and continue clicking to outline the highways connecting to the bridge. If you need to move the screen as you draw, use the arrow buttons on your keyboard. To zoom in and out if needed, use the scroll on your mouse.
29. When you have reached the end of your shape, double click.
30. Fill out the relevant information in the dialogue box. Title your polygon Pro Mubarak Demonstrators. For your description:

February 1, 2011: Area will be shut down for public transportation.

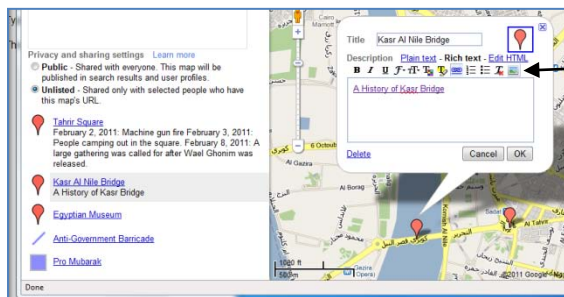
February 3, 2011: Foreign journalists attacked.

February 4, 2011: Buffer zone maintained by army



ADDING A PHOTO

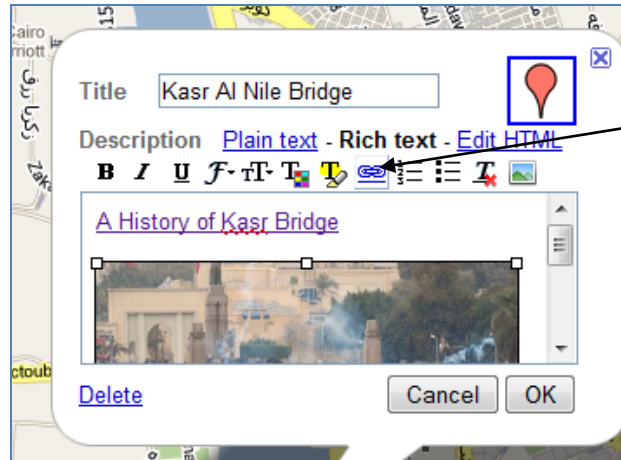
31. Click on the Kasr al Nile Bridge placemarker. Under the first link you made, type “Images”.
32. Search Google Images for a picture of the protests that happened on the bridge. Copy the URL. (note: when copying the URL, try if possible to get the URL for just the image. To do this in Google Images, click the “Full Size Image” link on the right hand side of the screen.)
33. **Click the Add Picture Icon** in the dialogue box for Kasr Al Nile Bridge.



Past the URL from the image into the pop up box, and click OK. The Description section should now have the picture you select inserted inside. Note: Make sure the cursor is placed in the Description Box in an area where you want the picture to be (i.e. after the link).

Turning a Photo into a Link

34. In Google Maps, click once on your image you inserted into the Kasr Al Nile Bridge description box. The image should have a border of 3 small squares per side to indicate it is selected. Click on the **Add Link** button.

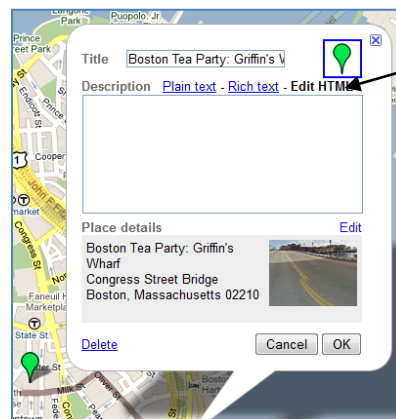


Paste your URL for the website in the pop up box and click OK. Now, the photo should be framed in another color to indicate it is a link. Click OK again.

Youtube embed format isn't working since they updated it.

ADDING A YOUTUBE VIDEO

35. Similar to adding links and images, youtube videos can be imbedded into placemarkers. Click on Tahrir Square placemark.
36. Search Youtube for Tahrir Square related video:
<http://www.youtube.com/watch?v=XfomFohLaTQ>
37. Click the **Embed Code** for the video. This is typically located beneath the video, next to "Share". Several options will be offered. Make sure the "Use Old Embed code" option is selected. Copy the embed code.
38. Back in Google Maps, on the dialogue box for **Tahrir Square** select the **EDIT html tab**.



39. Paste the embed code underneath the pre existing code. Make sure you do not change the code that is already there, or else you will lose previous work. Click OK.

40. On the left side of the screen, click Save and then Done. Click on the Tahrir Square placemaker, and you will now see your youtube video embedded.

41. When you are finished with your map, select **Done** on the left of the screen. The screen will change to show the title of your map, description, added features, etc. You may click **Edit** to change anything. To access this map again, simply login to Google Maps with your information, and select **My Maps**.