



REGEN
NETWORK

Blockchain 101

1



Ecological
Agreement



Network
Broadcast



Network
Verification

2



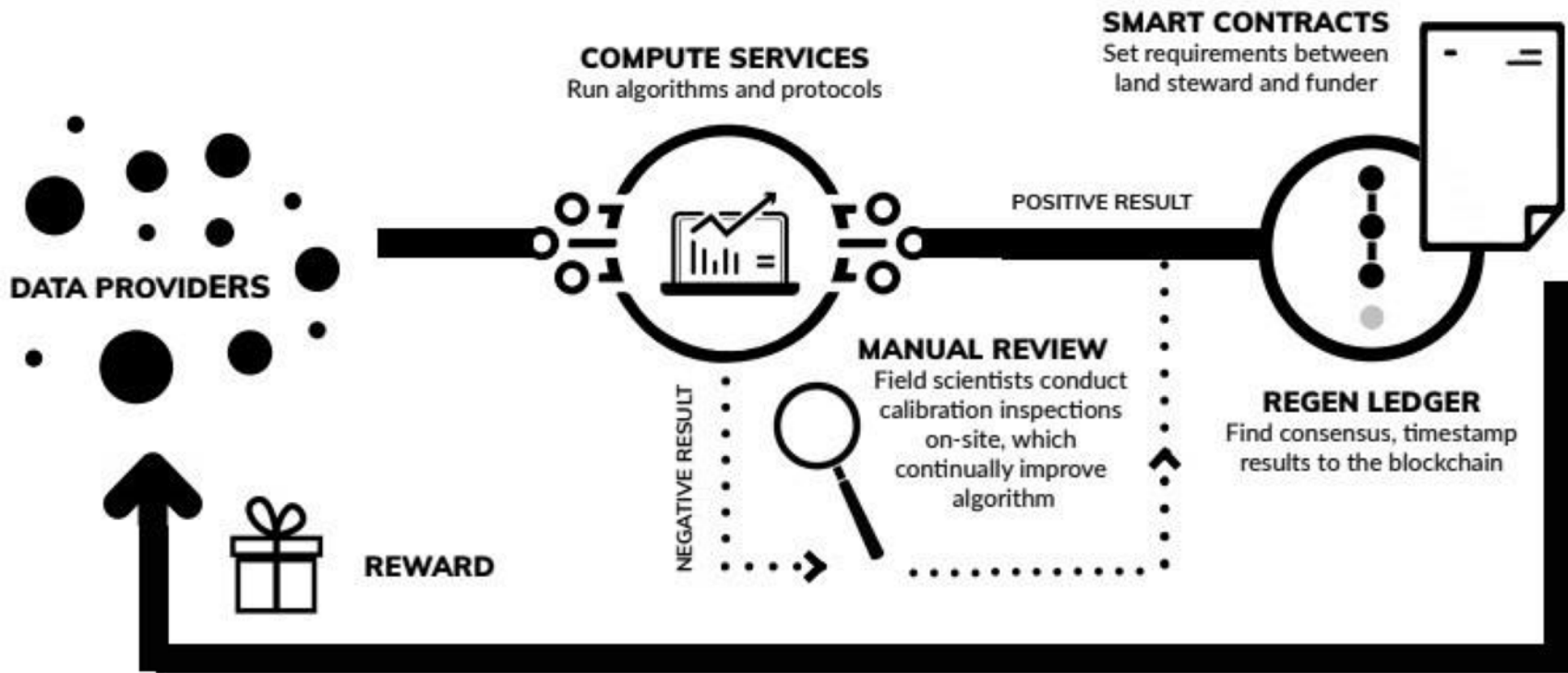
Verified Information Added to Blockchain

3

Ecological Agreement
Verified and Approved



Data Verification Model



CARBON APP

GOAL 8MT/HA
CURRENT STATE 6MT/HA



METHANE APP

BIOMASS
PH VALUE



WATER TEMPERATURE



WATER LEVEL
SALINITY
SULFATE CONTENT
CARBON SUPPLY

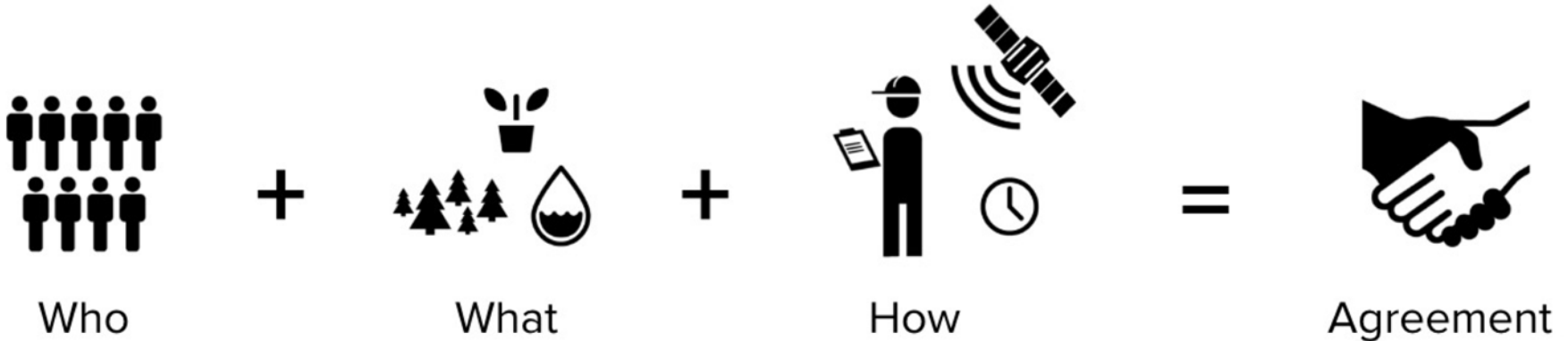
SIGNAL DATA

LOCAL SENSING
THREE TEMPERATURE SENSORS
REMOTE SENSING
LANDSAT 8 / SENTINEL 2
VEGETATIVE INDEX: EVI

SENTINEL 2_REMOTE SENSING

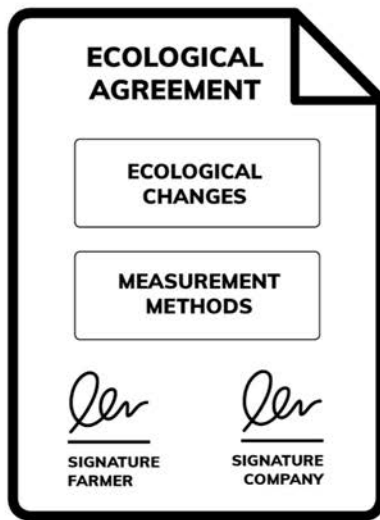


Ecological Agreements are context specific contracts between stakeholders to achieve clear and measurable outcomes.

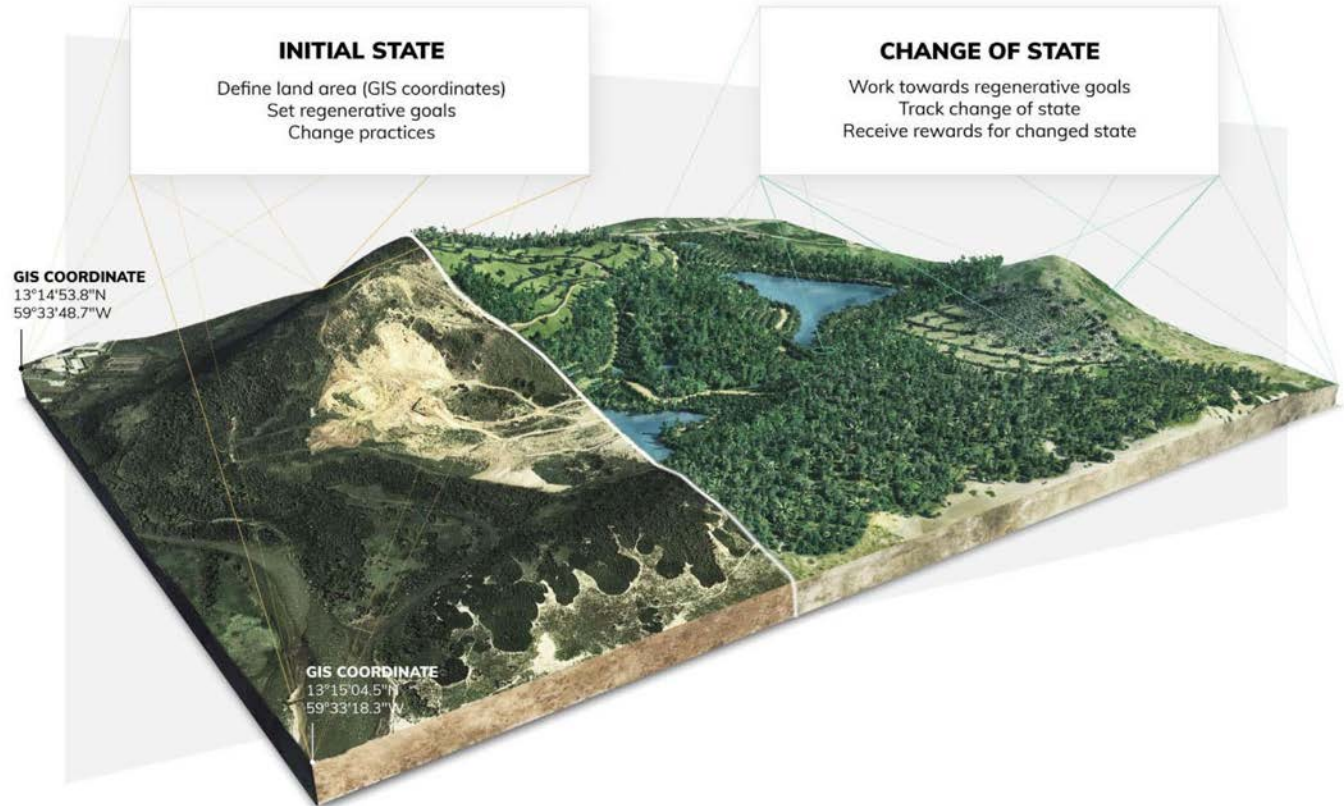


Ecological Agreements

An ecological agreement contains a protocol (what is being measured, when, by whom and how), and digital signatures from two parties. It can also contain information about what happens when a certain outcome (eg. avoided deforestation in a defined location for a set amount of time) is achieved (eg. payments/rewards).



Walkers Sand Mine



Walkers Sand Mine

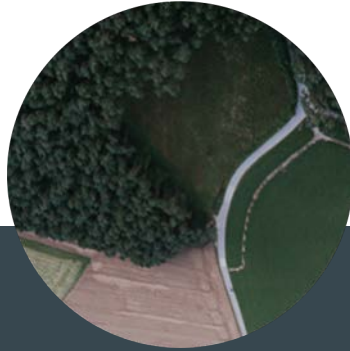


The ESPs assessed so far...



Land conversion

Land cover change assessments for the Time of Interest (TOI). Which land covers were replaced with what?



Landscape diversity

Landscape composition analysis through diversity, richness and evenness indexes.



Carbon sequestration

Potential changes in the Carbon sequestration rates (ton C/ha.yr), according to land cover changes and data from similar systems



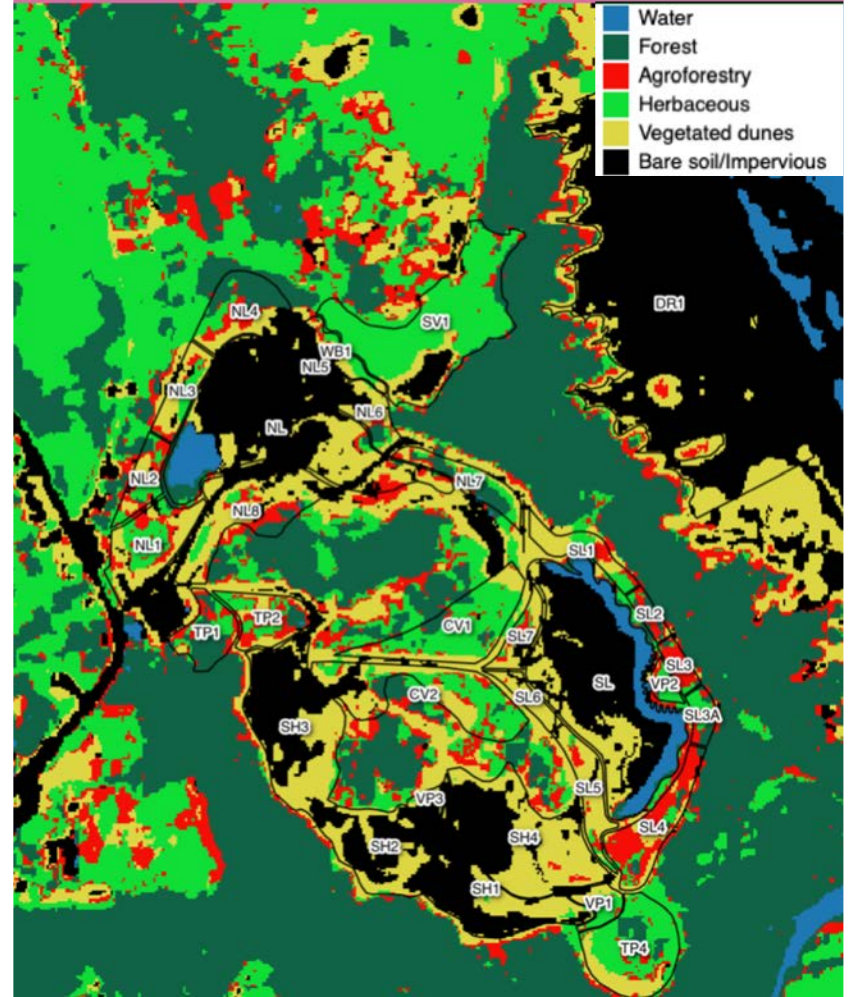
Land regeneration

Trends of steady changes in quantity, quality and development of vegetation through time, based on NDVI time series



Land CONVERSION

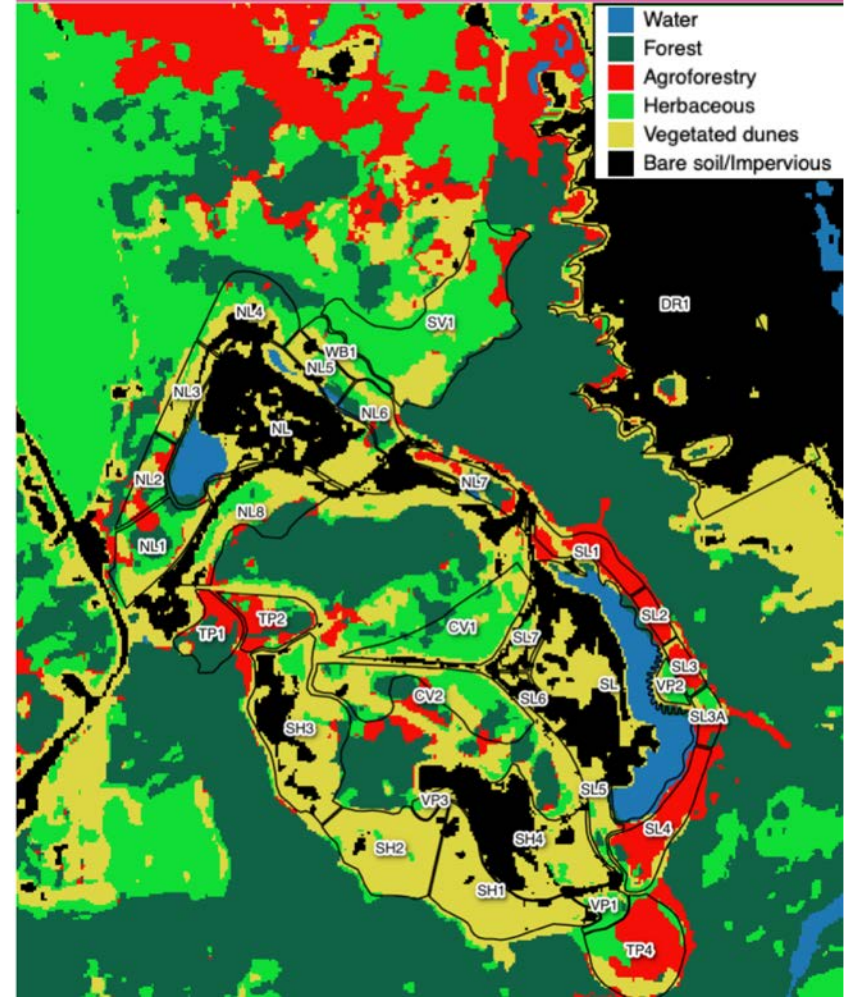
2017 PS- Knn - Dzetsaka





Land CONVERSION

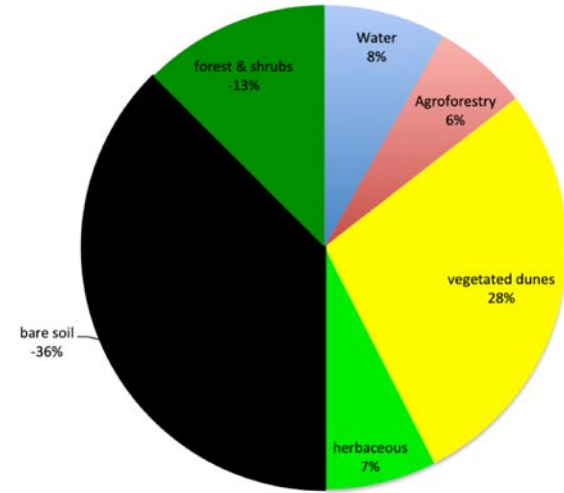
2018 PS- Knn - Dzetsaka





Land CONVERSION

Total areal change of land cover classess between 2017 and 2018



The overall net increase in vegetation cover estimated for the study area has been 3.6ha (8% of the area) between 2017 and 2018 wet seasons, due to:

- An increase in 3.4 ha of vegetated dunes
- An increase of 1 ha of herbaceous cover
- An increase of 1 ha of agroforestry
- Decrease in bushy/forest vegetation of 1.5 ha
- Water cover increased in 1 ha, mostly due to wetlands enlargement and restoration.



virgin atlantic



+

Walkers Reserve

+



REGEN
NETWORK



REGEN
NETWORK

Join the Network

www.regen.network



facebook.com/weareregennetwork/



twitter.com/regen_network



linkedin.com/company/regen-network/



medium.com/regen-network



gitlab.com/regen-network



riot.im/app/#/room/#regen.network:matrix.org