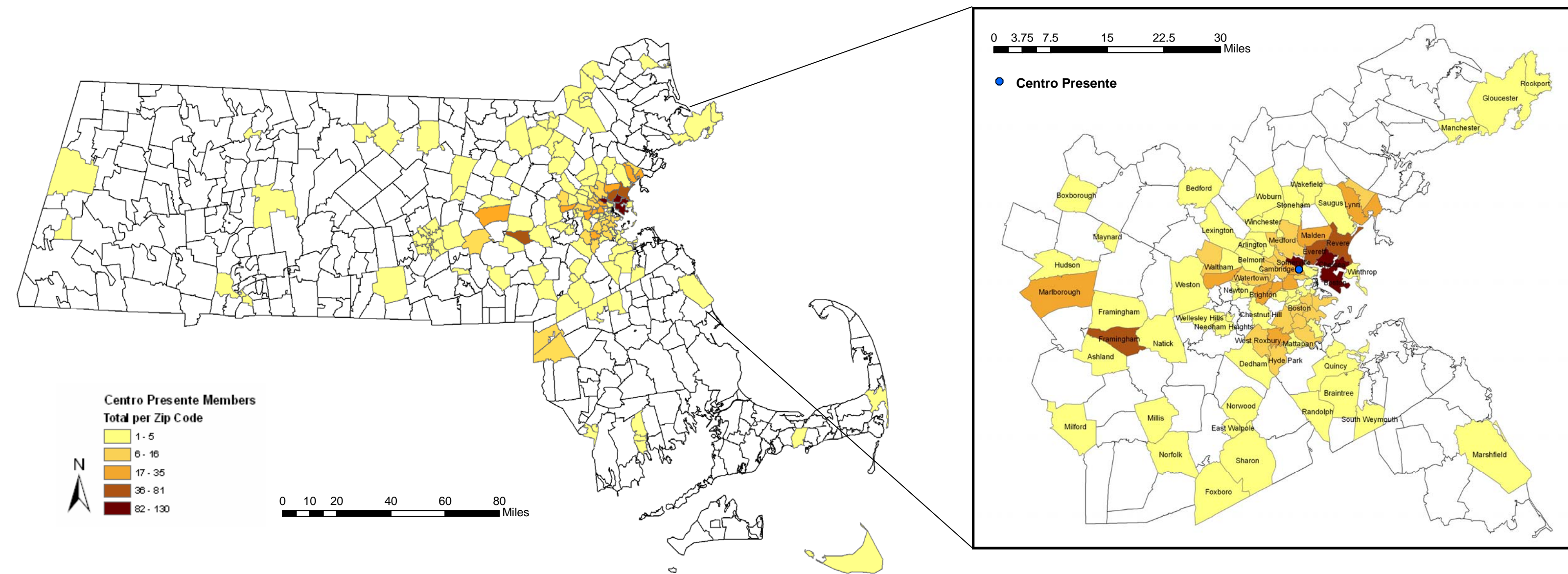


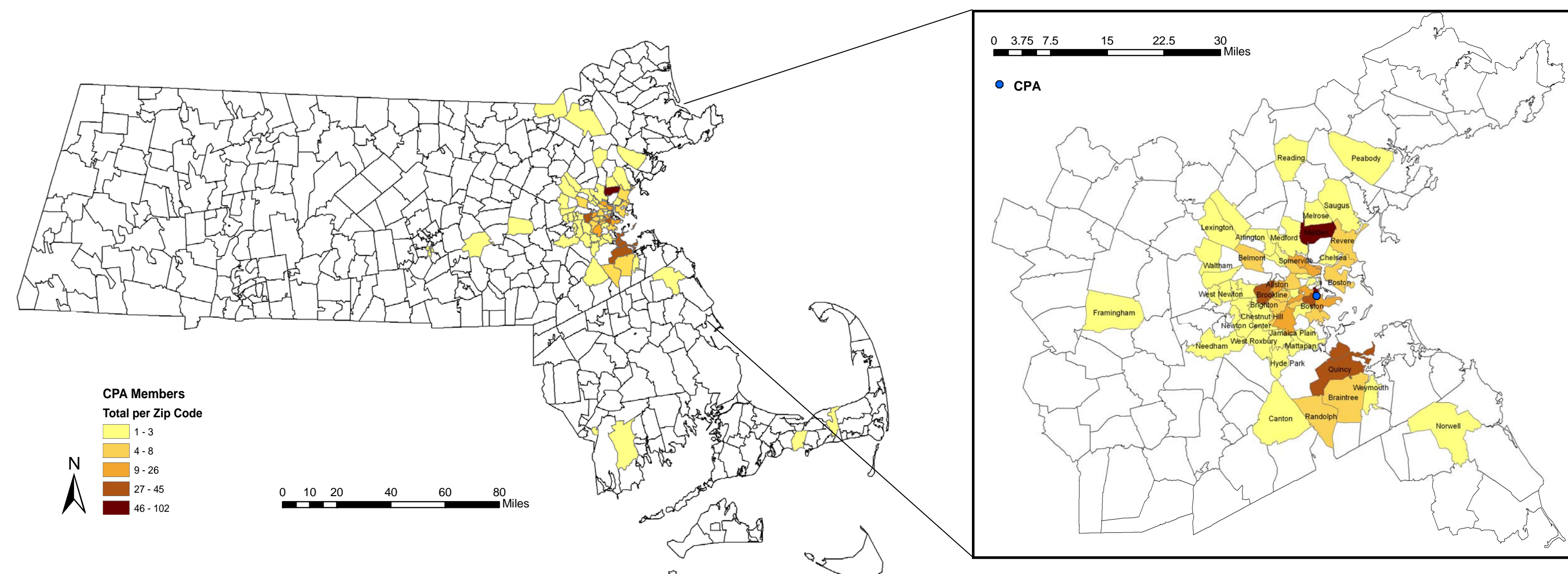
Immigrant Worker Centers in Greater Boston: Mapping for Strategic Organizing Campaigns

Where do the workers live?

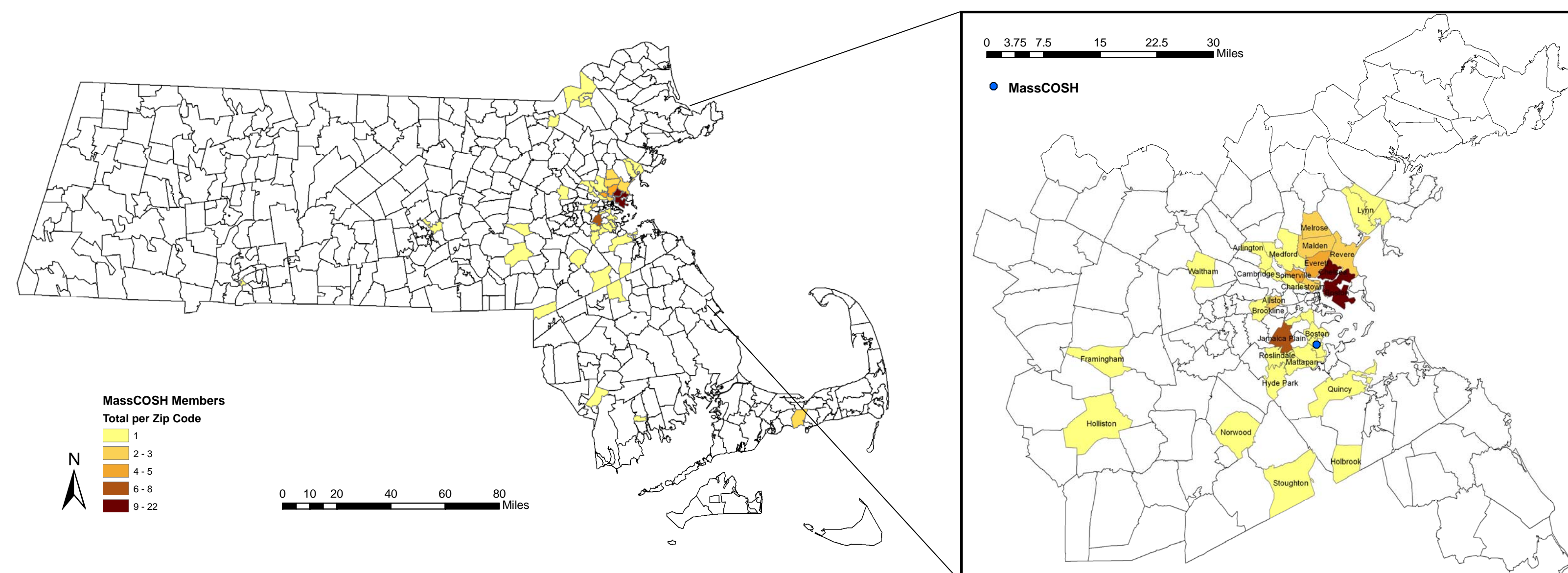
Centro Presente Members



Chinese Progressive Association Members

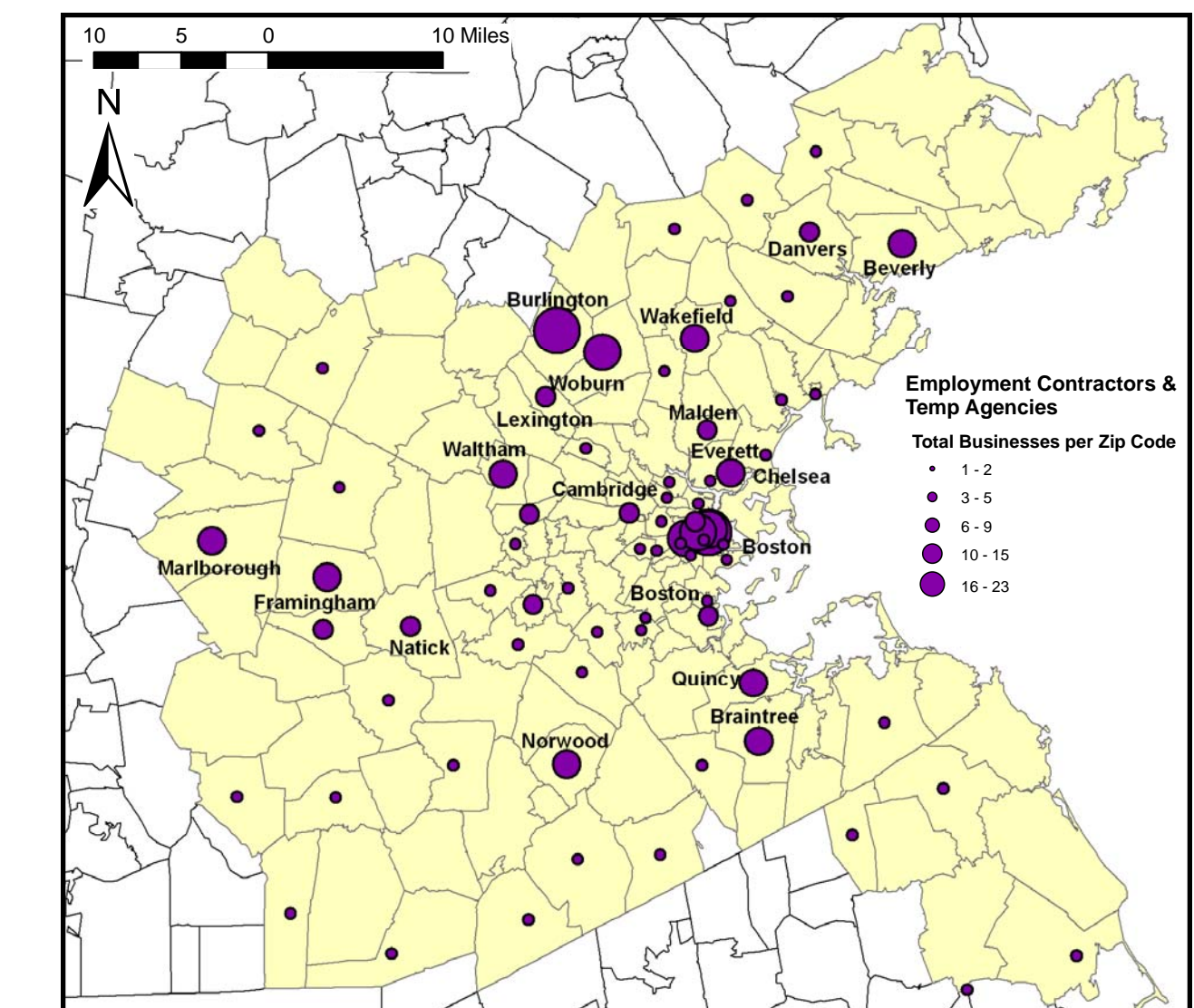


MassCOSH Members

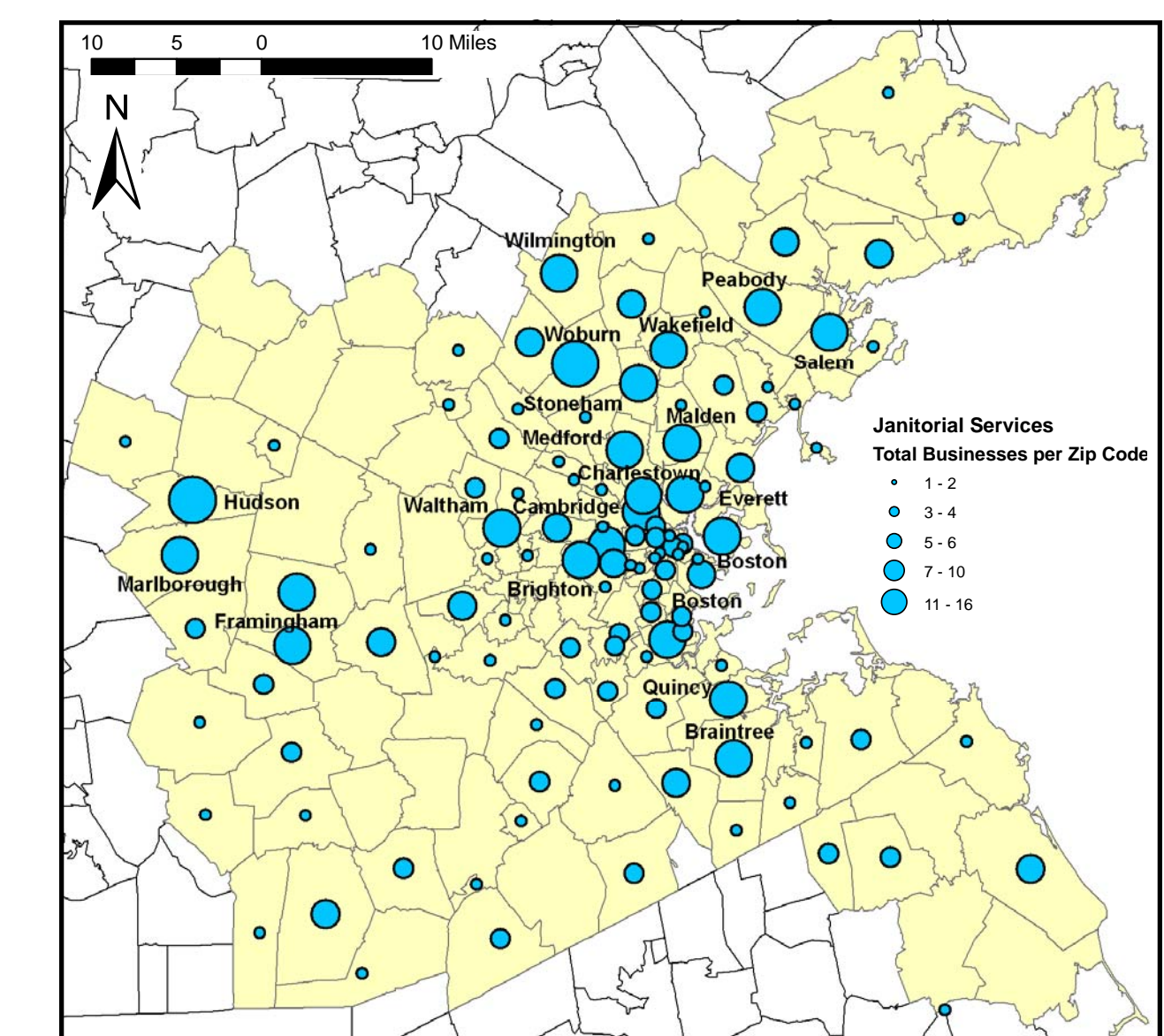


Where do the workers work?

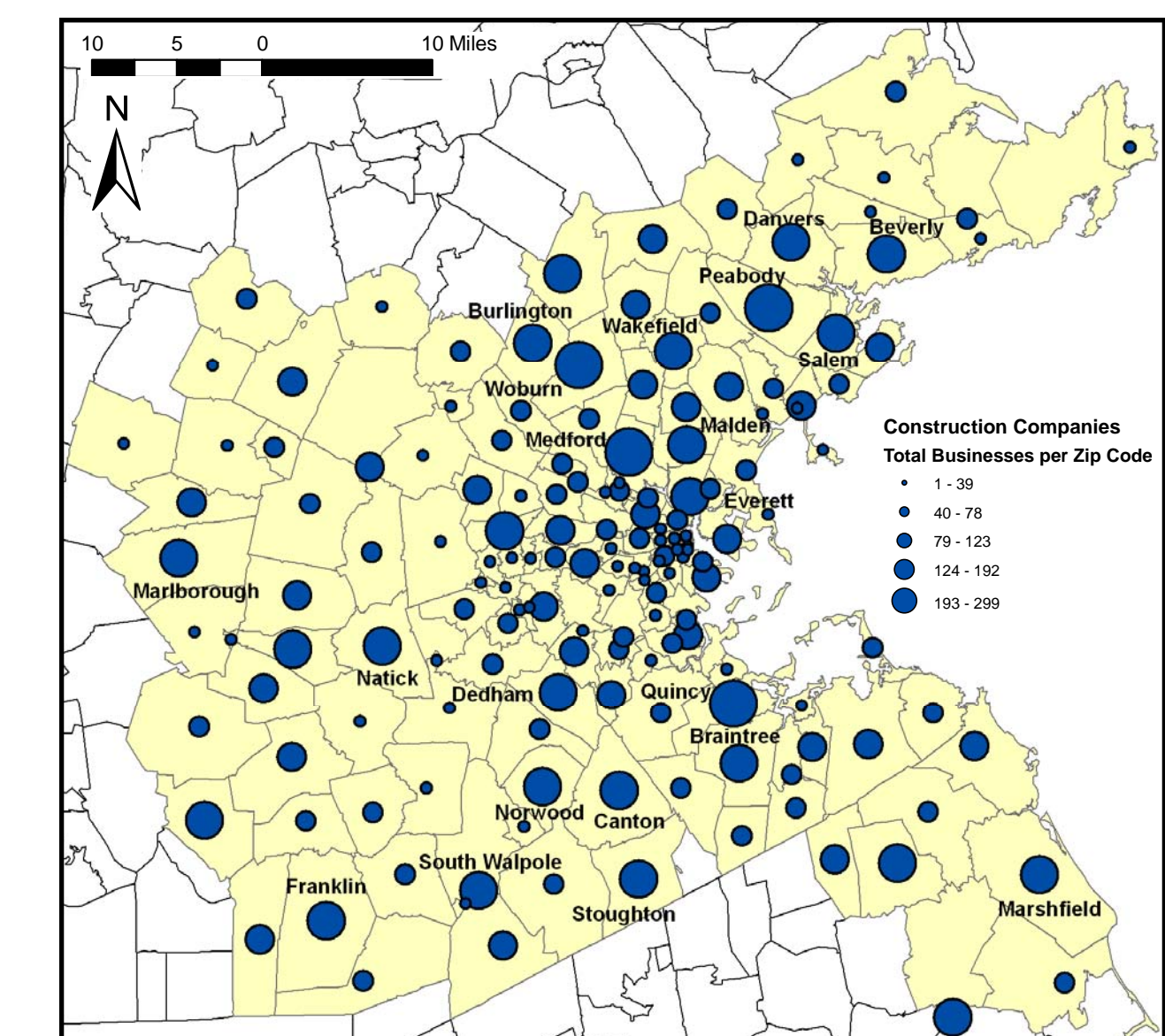
Employment Contractors & Temp Agencies



Janitorial Services



Construction Companies



Worker Centers

Community-based mediating institutions that provide support to and organize among communities of low-wage workers

Changing Context

Traditional models of labor organizing by industry and are ineffective in the new economy.

- Transnational movement of capital and workforce
- Rise of contingent work
- Change to service industry jobs

A New Organizing Model

Worker centers in the Greater Boston area recognize that in order to be effective in improving working conditions, they must develop a new model combining community and workplace organizing.

- Organize workers who live in particular geographic areas
- Concentrate organizing efforts on particular industries
- **Places that have both concentrations of workers and a particular industry are prime targets for organizing campaigns.**

Concentrations of Worker Center Members

- East Boston, Chinatown, Roxbury, Brighton, and Jamaica Plain neighborhoods of Boston
- Chelsea, Somerville, Everett, Malden, Quincy, Framingham

Concentrations of Low-Wage Industries

- Construction Companies, Employment Contractors & Temp Agencies, Home Health Care Agencies, Hotels & Motels, Housecleaning Services, Janitorial Services, Landscaping Companies, and Restaurants
- Primarily located in Boston proper (Downtown and East Boston); North Shore (Peabody, Danvers, Beverly, Rockport, Salem); North-west of Boston (Medford, Woburn, Burlington, Waltham); North of Boston (Lynn, Malden, Everett, Somerville, Cambridge); South Shore (Quincy, Braintree, Canton); and MetroWest (Framingham, Marlborough, Hudson)

Areas of Opportunity

- **East Boston:** Restaurants & Janitorial Services
- **Malden, Everett, Somerville:** Housecleaning & Janitorial Services
- **Quincy:** Home Health Care, Construction Companies & Restaurants
- **Framingham:** Housecleaning & Janitorial Services

Cartographer: Corey Kurtz, Urban & Environmental Policy & Planning
 Projection: NAD 1983 StatePlane Massachusetts Mainland
 Sources: Reference U.S.A. Business Data, Centro Presente, Chinese Progressive Association and MassCOSH Membership Databases, and 2000 U.S. Census Geography