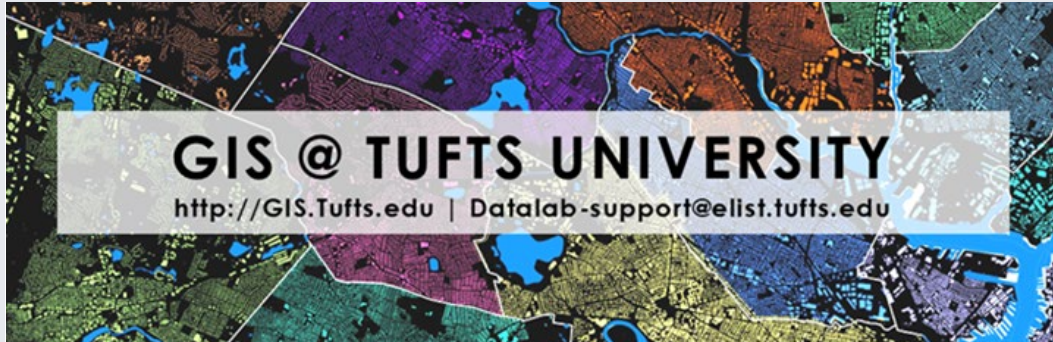


From: tuftsgis-request@elist.tufts.edu on behalf of [Talmadge, Carolyn C.](#)
To: tuftsgis@elist.tufts.edu
Subject: Tufts GIS Newsletter - February 26, 2025
Date: Wednesday, February 26, 2025 4:52:24 PM
Attachments: [image009.png](#)
[image005.png](#)
[image006.png](#)
[REEU_EIU_Agroecology_Fiver_2025.pdf](#)
[JD - GIS Technician Updated 2025.pdf](#)



GIS & Data Lab Newsletter

Tufts Data Lab | TTS Research Technology | February 26, 2025

Geospatial Competitions & Student Spotlight

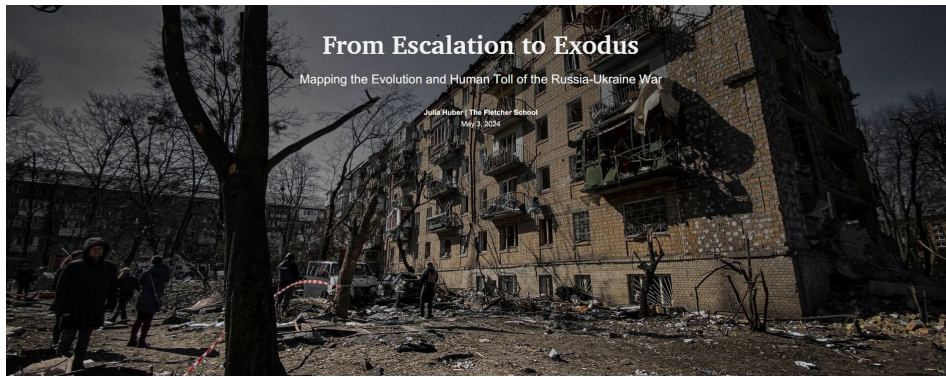
570+ storytellers from 58 countries entered the 2024 ArcGIS ESRI StoryMaps Competition and two Tufts Students are finalists!

Congratulations to [Jacqueline Powers](#) and [Julia Huber](#)! Let's show them the power of Tufts GIS and vote for their projects by March 12, 2025!

[Vote Here](#)



[Advancing Accessible Healthcare in Boston: A site selection analysis to determine where to place a new community health center by Jacqueline Powers](#)

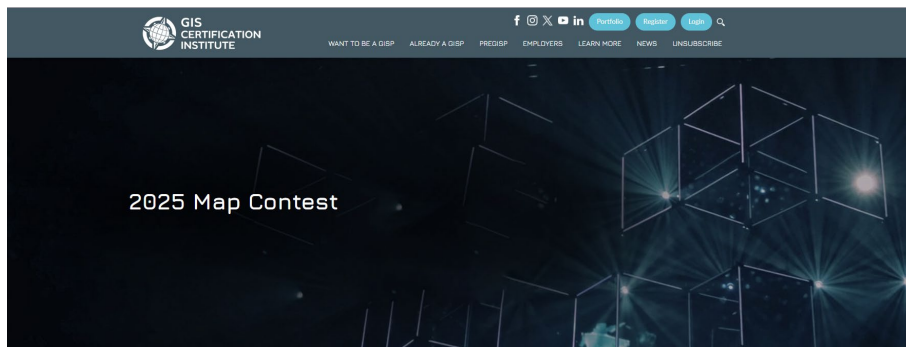


[From Escalation to Exodus: Mapping the Evolution and Human Toll of the Russia-Ukraine War by Julia Huber](#)

Congratulations to their Professors Dr. Rebecca Shakespeare and Dr. Marcia Moreno-Baez as well!

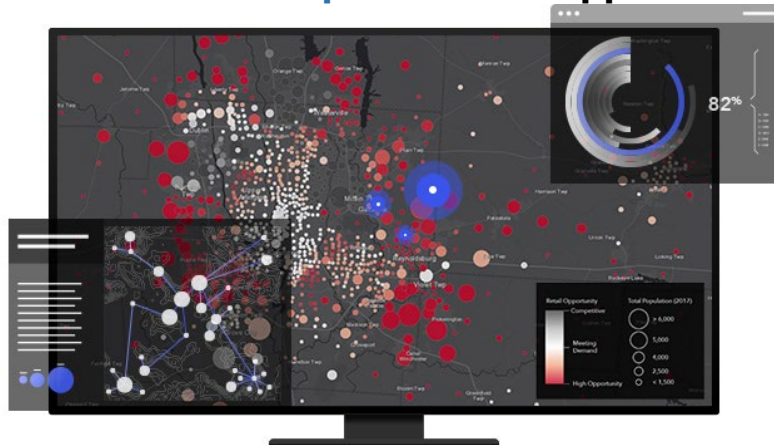
Regretting your decision not to enter the ESRI competition... don't worry, now's your chance to submit to the [GIS Certificate Institute Map Contest!](#)

Entry Deadline: Submissions due April 30, 2025. Only one entry per contestant will be accepted.



GISCI HOSTS AN ANNUAL MAP COMPETITION INVITING MEMBERS OF THE GIS COMMUNITY TO SUBMIT AND SHARE A MAP OF THEIR CREATION.

Tufts Summer Geospatial Class Opportunities



Learn from the Instructor that literally wrote the book on Web GIS **UEP231 - INTERACTIVE WEB MAPPING**

Offered Online from 07/01/2024 - 08/08/2024 on Tuesdays from 1:30 – 5PM

Here's why you need to enroll in this class:

- If you want to have a career in GIS, knowing ArcGIS Pro is no longer enough! Level up your GIS skills by enrolling in interactive web mapping. Learn what it means to truly harness the power of GIS and the full power of the ESRI ArcGIS Platform!
- Learn from an ESRI instructor the ins and outs of ArcGIS Online and various ESRI ArcGIS web apps and

dashboards! Get experience directly from an ESRI professional and be two steps ahead of the curve when it comes to the future of GIS

- Learn today's leading cloud and mobile GIS platforms, including ArcGIS Online, ArcGIS Enterprise, ArcGIS Instant Apps, StoryMaps, Experience Builder, Dashboards, Survey123, and Field Maps.
- Hands-On and immediately productive: **No coding experience is required.** Our course adopts a no-code/low-code approach, enabling you to create engaging web or mobile apps in each session, making you productive from day one.
- Develop Future-Ready Skills: Equip yourself with essential skills in 2D/3D mapping, spatial-temporal visualization, mobile GIS, VR, AR, and spatial data science to stay ahead in the technology curve.

Course Instructor: New UEP instructor Dr. Pinde Fu stands at the forefront of both the industry and academic aspects of Geographic Information Systems (GIS). As a Senior Principal Software Developer Engineer and Tech Lead at Esri, Dr. Fu has extensive real-world project experience, collaborating with numerous federal, state, local, and commercial organizations. He has effectively applied Web GIS technologies across various critical sectors, including health, environmental studies, emergency management, and natural resource management. Beyond his industrial achievements, Dr. Fu is highly active in the educational aspects of GIS. He has authored books including "Getting to Know Web GIS," which has guided countless students and professionals through the intricacies of modern GIS technologies and applications.



UEP 232/ DEIJ 275 – INTRO TO GIS

Offered Summer Session I: 05/21/2025 - 06/27/2025 on M/W from 9am – 12:30pm

Introduces Geographical Information Systems (GIS) theory, methods and their applications. Topics include GIS data structures, geodesy, cartography and spatial analysis using rasters and vectors. Includes extensive laboratory exercises that apply concepts presented in the lectures using ArcGIS. The course will include a final project using GIS to apply student interests.

Taught by Dr. Rebecca Shakespeare

Jobs and Internships!

DANGERMOND FELLOWSHIP | NATIONAL AUDUBON SOCIETY & ESRI

The Dangermond Fellowship is an exciting paid opportunity provided through the partnership between National Audubon Society and Environmental Systems Research Institute (Esri). **The goal of the program is to provide Fellows with exposure to enterprise-scale geographic information systems (GIS), conservation, science, and applied technologies in Audubon's Enterprise GIS department serving thousands of users.** Fellows will gain experience through hands-on application of skills and knowledge on a professional team in the areas of data management practices; geographic information product development; spatial analytics, querying, and programming; user engagement, communications, and insights generation; GIS server and cloud technologies; and user and content curation. Throughout the year, Fellows will receive extensive and immersive training in the full ArcGIS platform. They will have the potential to attend industry conference(s) and establish mentorship relationships with leaders in the GIS and conservation sectors.

This prestigious fellowship is designed to foster the next generation of leaders in GIS for the nonprofit/conservation sectors and make the sector a more inclusive and equitable space for professionals of different backgrounds. Individuals from diverse disciplines— including but not limited to computer science, environmental science, data science, and geospatial information science—are encouraged to apply. The position is a one-year commitment running from June 2025 until June 2026. Fellows will work full-time over the duration of the year and are eligible for the benefits and time off categories associated with commensurate full-time roles. Applicants must submit a resume and cover letter to be considered.

Compensation: \$25.35 / hour

More Info & Apply Here: https://audubon.wd5.myworkdayjobs.com/en-US/Audubon/job/Dangermond-Fellow_JR649

STAFF GIS SPECIALIST | NBC UNIVERSAL

Employees can work remotely | Full-time | Business Segment: NBCU Corporate

Apply & More Info: <https://jobs.smartrecruiters.com/NBCUniversal3/744000043734666-staff-gis-specialist>

In this role, you'll gather data from different sources (like maps and satellite images) for specific regions to make sure we have all the information we need. You'll investigate various sources of data, including free and paid options, and check if they cover the areas we need, if they're up-to-date, and ensure their quality.

To prepare this data, you'll use specialized tools (like GDAL and custom software) to clean, resize, and align it so it's ready for our team to use. This role involves working closely with different teams in our organization. You'll partner with the AI/ML teams to supply diverse data they need for building new machine learning models, and with the Pipeline and Product teams to ensure they have the necessary data required.

Responsibilities include, but not limited to:

- Aggregate data for target regions and ensure that a complete collection of data is available.
- Research open, public domain, and commercial sensor data sources to determine the areas, quality, and freshness of available data.
- Utilize open source (e.g. gda1) and internally developed software tools to preprocess, align, crop, resample, and otherwise prepare data for use
- Contribute to our internal tools that process and source geospatial datasets.
- Partner with groups across the organization to understand needs for GIS data for AI/ML research. Coordinate with AI/ML team to provide diverse data for developing new machine learning algorithms, and the Pipeline and Product teams to provide data to roll out new regions.
- Partner closely with leadership to understand the high-level product vision

This position is eligible for company sponsored benefits, including medical, dental and vision insurance, 401(k), paid leave, tuition reimbursement, and a variety of other discounts and perks. Learn more about the benefits offered by NBCUniversal by visiting the Benefits page of the Careers website. Salary range: \$125,000 - \$155,000 (bonus eligibility).

GIS SPECIALIST INTERN SUMMER 2025 | NORTH CAROLINA - RALEIGH

Hybrid Work Options may be considered for successful candidate.

CDM Smith is looking for a GIS Intern to join the team! You'll be working with a dynamic team of industry leading engineers on a diverse portfolio of public, federal, and industrial projects. Are you ready to take the next step in your career? This Geographic Information Systems internship would be working with a range of GIS technologies to develop and analyze geographic data. You would also develop GIS data from a variety of source documents including engineering design plans, CADD files and reports. Gain experience creating and printing mapping products including utility drawing check plots. Assist in carrying out supervised quality control and assurance on GIS data including automated data integrity operations. May perform basic GIS analysis and query operations. May develop simple automation processes and scripts under supervision.

Learn More: https://sjobs.brassring.com/TGnewUI/Search/Home/Home?partnerid=25038&siteid=5220#jobDetails=1595764_5220

GIS TECHNICIAN | TOWN OF NEWINGTON, CT

The Town of Newington is looking for the right individual to come and work collaboratively to maintain our municipal GIS. This position will work on projects that impact and improve the community, Town administration, and public safety operations.

Applicants should expect day to day responsibilities to include involvement in all aspects of municipal government and that no day will be the same. Current projects include stormwater infrastructure, Town Center Master Plan, Tree Inventory, Address Points, Broadband Expansion, Sidewalk mapping, and Road Pavement Management. It is expected that the applicant would bring some experience, but opportunities to learn and grow will be provided. The ability to comprehend complex information and provide innovative solutions is expected.

Salary: \$70,000-\$80,000/annually

Apply: <https://www.newingtonct.gov/jobs.aspx?Uniqueid=98&From=All&CommunityJobs=False&JobID=Geographic-Information-Systems-GIS-Tech-127>

SUMMER RESEARCH EXPERIENCE AND EXTENSION FOR UNDERGRADUATE (REEU) STUDENTS

Florida International University's Agroecology Program is looking for 10 exceptional undergraduate students to participate in our USDA-NIFA and USDA HSI funded Research and Extension Experiences for Undergraduates (REEU) Program. This REEU program covers research and outreach activities relating to soil science, climate change, microbiology, climate control agriculture, horticulture, farm business & markets, Geographic Information Systems (GIS), and Remote Sensing. Professional development seminars, career development workshops, leadership skill training, and a poster presentation are also included.

8-week Summer Program: June 9th to August 1st | up to \$2,500 stipend | On-campus housing will be provided for out-of-state students | *Applicant must be a current undergraduate student at a U.S. University with a GPA of 3.0 or above.*

Applicant must be a U.S. citizen.

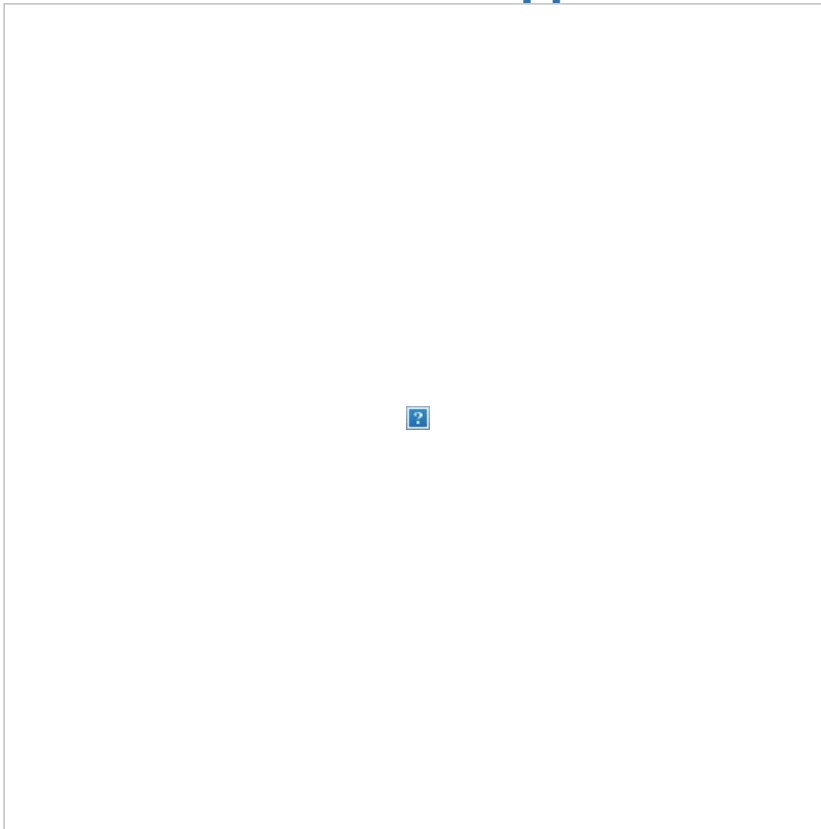
See attached flyer for more info.

MORE INTERNSHIPS

- Google-X: [AI resident \(MS or PhD student\) planetary-scale decarbonization](#)
- Muos Space: [Data Science Summer Intern](#)
- Moodys: [Model Development 1](#), [Model Development 2](#), [Model Development 3](#), [Modeling Analyst](#)
- Texas Parks and Wildlife: [GIS Analysis](#)
- NASA GSFC: [2 computer science interns](#)
- [NASA DEVELOP](#)
- LEAP: [Summer positions on AI and Climate](#)
- Nature Portfolio (London): [Editorial Data Analyst Intern](#)

Internship opportunities graciously gathered by ALI AHMADALIPOUR's Geospatial Jobs newsletter. [Subscribe here](#) for the full newsletter

Other Opportunities



We invite you to [register](#) for the [Women in Data Science \(WiDS\) Cambridge conference](#), taking place **Friday, March 7th, 2025 from 8:00am - 4:30pm ET at Microsoft New England (NERD Center) in Cambridge, MA.**

For the ninth year, MIT, Harvard, and Microsoft New England are proud to collaborate with [Women in Data Science \(WiDS\) Worldwide](#) to bring the WiDS regional conference to Cambridge, Massachusetts. This year, WiDS Worldwide will be joining us onsite, and we will also have a livestream to accommodate a global audience.

WiDS Cambridge features a world class lineup of speakers and panelists from academia and industry, presenting cutting-edge research and insights. The event includes a keynote, lightning talks, and three panel discussions. Additionally, there will be a poster session, recruiting tables, speed networking, and mentoring sessions,

This year's theme is Sustainable Computing, and the keynote will be given by [MIT Professor Vivienne Sze](#). See the full program [here](#).

WiDS Cambridge is part of the broader Women in Data Science Worldwide initiative, which aims to achieve

30% representation for women in data science by 2030, with a long-term vision of full and equal representation in decision-making, economic prosperity, and opportunities.

Learn more including registration and program updates at widscambridge.org.

Email wids-cambridge@mit.edu with any questions regarding the conference.



ANNOUNCING

THE OSG SCHOOL 2025!

We are seeking applicants for the [OSG School 2025](#), to be held June 23-27, at the beautiful University of Wisconsin in Madison. Apply by March 7! Also consider attending [Throughput Computing Week 2025](#), in-person or remotely

The OSG School uses lectures, demonstrations, hands-on exercises, personal consulting with OSG experts, and even roleplaying to teach you how to use high-throughput computing (HTC) effectively and get a research workload up and running. We pay all basic travel, hotel, and food costs for applicants who are selected to attend. Admission to the school, while competitive, is a valuable opportunity to advance your work.

This is an in-person event, and we will strive to provide a healthy, inclusive, environment for all.

IMPORTANT DATES

- Application Period (OPEN NOW): 4 February - 7 March 2025
- OSG School: 23-27 June 2025

Contact us: MORE INFORMATION AND APPLICATIONS

- [Web](#)
- Email: school@osg-htc.org

This email was sent to TuftsGIS@elist.tufts.edu.
To unsubscribe from our elist, visit elist.tufts.edu.