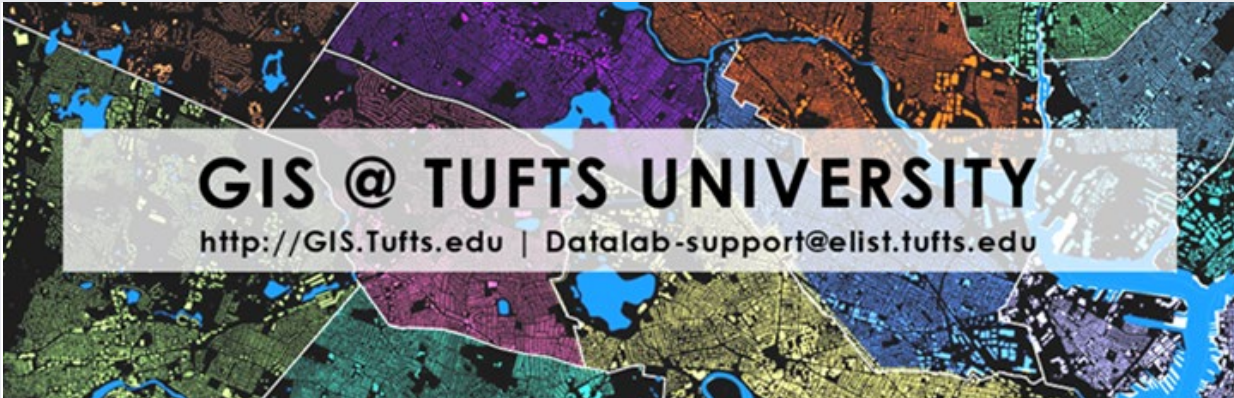


From: tuftsgis-request@elist.tufts.edu on behalf of [Talmadge, Carolyn C.](#)
To: tuftsgis@elist.tufts.edu
Subject: Tufts GIS Newsletter - February 6, 2024
Date: Thursday, February 6, 2025 2:21:36 PM
Attachments: [image009.png](#)
[image004.png](#)
[image006.png](#)
[Identity & Access Management Internship Description.pdf](#)
[Call for Applications - TTS Lab Build Internship.pdf](#)
[TTS Lab Build Internship Description.pdf](#)
[Call for Applications - IAM Internship.pdf](#)



Workshops, Events, Data Rescue, & Internships!

[Tufts Data Lab](#) | [Research Technology](#) | [Tufts Technology Services](#)

The year rolls on. Lots of exciting upcoming events including Love Data Week, an ESRI Workshop on GeoAI, and more.

Internships

TTS Lab Build Intern

Tufts Technology Services (TTS) seeks a Lab Build Intern to assist with the entire lab build cycle, providing a unique opportunity to learn how TTS manages, develops, test, and deploys public computing infrastructure. The intern will play a key role in supporting Tufts' annual computer lab build process, which ensures a consistent software and user experience across all public computer labs and virtual infrastructure. The intern will collaborate with teams across TTS including Client Support Services (CSS), Educational Technology and Learning Spaces (ETLS), and Research Technology (RT).

Hybrid \$25/hr for 35 hrs/wk over a flexible summer term. **Application deadline extended to 2/11** so apply quickly! See the attached flier and description for more details and apply [here!](#)

TTS Identity & Access Management (IAM) Intern

The Identity and Access team are starting a new modernization project at the University. We will leverage your feedback and experiences with Tufts identity systems as student to help us improve our solutions for future students. This position will be working closely with our system engineers to assist with current identity and access activities, including support of our identity lifecycle management including user account maintenance, review and reporting of account configurations such as group membership and account attributes, provisioning and entitlements.

Remote \$25/hr for 30 - 35 hrs/wk over a flexible summer term. Application deadline 2/7 so apply quickly! See the attached flier and description for more details and apply [here!](#)

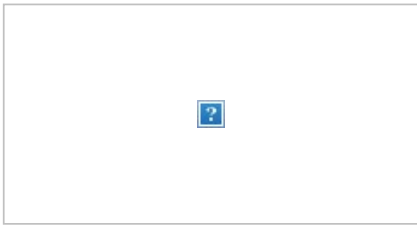
Computer Science Intern - Climate Policy Program

SEI US seeks an intern who is currently an enrolled student in a Greater Boston area University (bachelor's or graduate school program) with computer science experience and strong interest in environment and development issues to support our AI Policy Reader tool as part of the Climate Policy team. SEI US is a non-profit research organization focused on informing and engaging decision-makers on energy, water, and climate policy. As the in-house built AI Policy Reader tool demand continues to expand, our team seeks additional technical support in making optimal use of AI. This improved AI tool will dramatically improve the efficiency of research across the institute and drive innovative solutions to pressing environmental and global development challenges.

The AI Policy Reader tool leverages the best available Large Language Models (LLMs) to help researchers scan collections of large documents with targeted inquiries. Before the development of our tool, researchers at many think tanks like SEI spent countless hours and funding for research assistants to read through hundreds of long documents to examine, for example, the degree to which national climate policies are incorporating equity considerations. Cutting edge LLM can now dramatically enhance the efficiency of such tasks.

The tool is built entirely with Python. The app's interface is built and hosted using an open-source framework called Streamlit. The code is hosted and shared using GitHub version control in a collaborative project.

See more details on [Handshake!](#)



Events & Workshops

Introduction to Singularity: running containerized applications on HPC

Online, Thurs 2/13 1 - 3 PM

[Registration link](#)

This workshop is designed for researchers and students looking to simplify software management, ensure reproducibility, and run complex applications easily and efficiently. You will learn the basics of Singularity and how to use Singularity to pull and run containerized applications on Tufts HPC.

Beginner's Guide to Bioinformatics on HPC

Online, Thurs 2/27 1 - 3 PM

[Registration link](#)

This beginner-friendly workshop provides an essential introduction to high-performance computing (HPC), Linux, and foundational bioinformatics tools. Participants will explore available computing and bioinformatics resources, gain hands-on experience with navigating the Linux command line, and learn how to write and submit Slurm job scripts for both CPU and GPU-based tasks. Enhance your computational research skills and take the first step toward mastering bioinformatics workflows on HPC systems! No previous experience in HPC is needed.

Love Data Week 2024



Love Data Week 2025

Love Data Week is an international celebration of data, taking place every year during the week of Valentine's day. Universities, nonprofit organizations, government agencies, corporations and individuals are encouraged to host and participate in data-related events and activities.

Tisch Library is hosting a variety of workshops and events during the week of February 10-14, 2025. These are open to all students, faculty, or staff.

- **Tuesday, February 11, 2025 (12 to 1 PM):** [From Script to Print: Transcribing Archival Documents with Handwritten Text Recognition](#)
- **Wednesday, February 12, 2025 (12 to 1 PM):** [Analyzing Historical Documents with Minimal Computing Methods](#)
- **Thursday, February 13, 2025 (12 to 1 PM):** [Let's build a search engine: Exploring the past with Natural Language Processing](#)
- **Thursday, February 13, 2025 (12 to 1 PM) ONLINE:** [ESRI Workshop: Introduction to GeoAI with ArcGIS: mapping and analysis \(More Below\)](#)
- **Friday, February 14, 2025 (12 to 3 PM):** [Douglass Day Transcribe-a-thon: Help create resources for learning about Black History!](#)

Read more about [Love Data Week at Tufts](#) and [Love Data Week in general](#)



Thursday, February 13th, 12 pm – 1 pm:
Online via Zoom, *registration required*

Introduction to GeoAI with ArcGIS: Mapping and Analysis

It seems like every time you turn around, another technology is adding 'AI' into its capabilities. Yet, in the geospatial world, machine learning has been a core part of ArcGIS for more than 2 decades. While GeoAI can seem intimidating, there are a host of tools and assistants that provide users of all levels, with ways to enhance their mapping and analysis (both vector and raster!). In this session, you will get an overview of how and where GeoAI can be used throughout the ArcGIS ecosystem, like ArcGIS Pro and ArcGIS Online. You will also get a preview for how AI assistants in ArcGIS can be used to create forms, query data, and get faster access to help documentation.

REGISTER FOR THIS

ESRI WORKSHOP:

<https://tufts.libcal.com/event/14123457>
or at Go.tufts.edu/workshops



Workshop taught by Brian Baldwin,
Lead Solutions Engineer – Higher Education

Brian currently works at ESRI supporting Higher Education and has been working in the GIS and geospatial industry for more than 13 years. GIS brought Brian from the frozen tundra of Duluth MN as a digitizer, to the Big Island of Hawaii as a GIS Analyst, and the streets of Milwaukee as a Crime Analyst. Brian teaches GIS in the School of Interactive Games and Media at the Rochester Institute of Technology (RIT), Brian has also taught GIS at the University of Wisconsin-Milwaukee and Salem State University. Brian is a proud Returned Peace Corps Volunteer, father of 2, and husband to 1.

GEOSPATIAL CONFERENCES



State of the Map US 2025

The Mappiest Event of the Year

Boston University, June 19 - 21, 2025 | [Conference website](#)

State of the Map US is the largest gathering of OpenStreetMap (OSM) community members from across the country. This year we're spotlighting the successes and challenges of mobility mapping with the theme "Charting the Course". Come connect with mappers, businesses, academics, government agencies, and nonprofits, all collaborating around the free and editable map of the world. Share your vision for the project, learn how to work with OpenStreetMap, and hack on the latest open-source tools.

Whether you're brand new to open mapping or you're an OpenStreetMap veteran, this conference is for you. We're excited to see you in Boston.

Esri Federal GIS Conference

- **Date:** February 24–26, 2025
- **Location:** Washington, D.C., USA
- **Description:** This conference brings together GIS professionals from various government agencies to explore how GIS technology is used to address complex challenges and drive digital transformation.

[More Geospatial conferences](#)

Upcoming Massive Open Online Courses (MOOCs) from ESRI

With 2025 already in motion, set yourself up for continued success and learn in-demand skills and workflows by registering for this year's no-cost MOOCs.

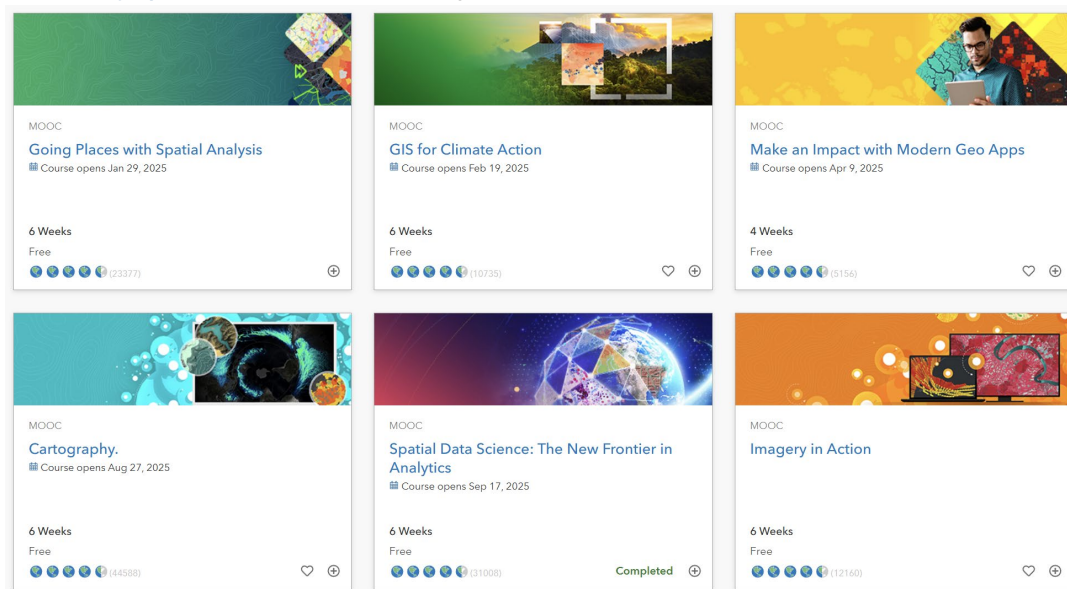
Each course is an opportunity to explore a trending GIS topic and practice using ArcGIS software in guided exercises. You'll hear from subject matter experts in videos and interact with peers from all around the world in discussion forums.

You'll earn a certificate for completing each course (great to add to your LinkedIn profile and résumé), and Esri MOOCs don't cost anything.

Register: <https://www.esri.com/training/mooc/>

- *Going Places with Spatial Analysis* 1/29 - 3/12
- *GIS for Climate Action* 2/19 - 4/2

- *Modern Geo-Apps* 4/9 - 5/7
- *Cartography* 8/27 - 10/8
- *Spatial Data Science* 9/17 - 10/29
- *Imagery in Action* Check back next year!



Data Lab Spotlight

Data Lab Assistant and Tufts Senior Jeannine Pecoraro is the first Drone Class student to pass her pilot exam. Jeannine Pecoraro is a senior at Tufts double majoring in Philosophy and Environmental Studies with a minor in cognitive brain science. As a Data Lab Assistant and TA, she provides support to students in GIS coursework and projects. She has taken many of the GIS classes at Tufts, including the inaugural class of ENV 121: Drones for Data Collection, Mapping, and Analysis. Congrats to Jeannine on this great accomplishment!

Federal Data Rescue Highlights

The Data Lab and Tisch Library are monitoring and watching various federal data rescue efforts.

Tisch Library has compiled a list of resources for locating archived data and information:

<https://researchguides.library.tufts.edu/c.php?g=1450029&p=10777469>

You can also read about more of the efforts at Harvard and other organizations:

<https://journalistsresource.org/home/researchers-rush-to-preserve-federal-health-databases-before-they-disappear-from-government-websites/>.

We are aware of the outage of the TIGER/LINE downloads and have backups in the M drive, along with all of the ESRI Data available for 2023.

This email was sent to TuftsGIS@elist.tufts.edu.

To unsubscribe from our elist, visit elist.tufts.edu.