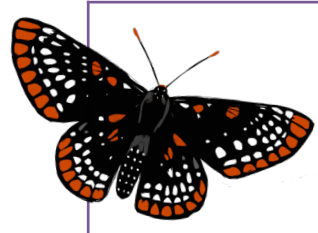
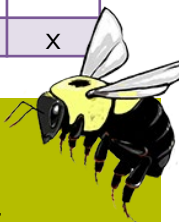


You can help pollinators by growing **native shrubs!**



| Native Shrub | Bloom Time | Bees | Butterflies/moths | Wasps | Hoverflies | Beetles | Other insects |
|--|------------|------|-------------------|-------|------------|---------|---------------|
| American hazelnut (<i>Corylus americana</i>) | Mar | | * | | | | |
| Spicebush (<i>Lindera benzoin</i>) | Mar - Apr | x | * | | | | x |
| Pussy willow (<i>Salix discolor</i>) | Mar - Apr | x | * | | x | | x |
| Prairie willow (<i>Salix humilis</i>) | Mar - Apr | x | * | | x | | x |
| American plum (<i>Prunus americana</i>) | Apr | x | x* | | x | | x |
| Beach plum (<i>Prunus maritima</i>) | Apr | x | x* | | x | | x |
| Red chokeberry (<i>Aronia arbutifolia</i>) | May | x | x* | | x | | x |
| Black chokeberry (<i>Aronia melanocarpa</i>) | May | x | x* | | x | | |
| Highbush blueberry (<i>Vaccinium corymbosum</i>) | May | x | x* | | x | | |
| Black huckleberry (<i>Gaylussacia baccata</i>) | May | x | x* | | x | | |
| Nannyberry (<i>Viburnum lentago</i>) | May - Jun | x | * | x | x | x | x |
| Arrowwood (<i>Viburnum dentatum</i>) | May - Jun | x | * | x | x | x | x |
| Highbush cranberry (<i>Viburnum trilobum</i>) | May - Jun | x | x* | x | x | x | x |
| Red osier dogwood (<i>Swida sericea</i>) | May - Jun | x | x* | x | x | x | x |
| Gray dogwood (<i>Swida racemosa</i>) | May - Jun | x | x* | x | x | x | x |
| Silky dogwood (<i>Swida amomum</i>) | May - Jun | x | x* | x | x | x | x |
| Ninebark (<i>Physocarpus opulifolius</i>) | Jun | x | x | x | x | | |
| Black elderberry (<i>Sambucus nigra</i>) | Jun | x | | x | x | x | |
| Virginia rose (<i>Rosa virginiana</i>) | Jun | x | | | x | | |
| Purple flowering raspberry (<i>Rubus odoratus</i>) | Jun | x | x | x | x | | |
| Blackberry (<i>Rubus</i> spp.) | Jun | x | x | x | x | | |
| St. John's Wort (shrubby; <i>Hypericum</i> spp.) | Jun | x | x | | | | |
| Inkberry holly (<i>Ilex glabra</i>) | Jun - Jul | x | * | | x | | x |
| Winterberry (<i>Ilex verticillata</i>) | Jun - Jul | x | * | | x | | x |
| New Jersey tea (<i>Ceanothus americanus</i>) | Jun - Jul | x | x | x | x | x | x |
| Summersweet (<i>Clethra alnifolia</i>) | Jul - Aug | x | x* | | | | |
| Steeplebush (<i>Spiraea tomentosa</i>) | Jul - Aug | x | x | x | x | x | |
| Meadowsweet (<i>Spiraea alba</i>) | Jul - Aug | x | x | x | x | x | |
| Buttonbush (<i>Cephalanthus occidentalis</i>) | Jul - Aug | x | x* | x | x | x | x |

x = adult food plant; * = larval food plant



REMEMBER:

1. Choose shrubs that bloom in succession.
2. Give shrubs plenty of room to grow.
3. Leave dead stems and leaves as shelter for insects, like bees!

Where to buy in MA:

- Native Plant Trust
- Russell's Garden Center
- New England Wetland Plants

Tufts
Pollinator Initiative