

Denticulate longhorn bee

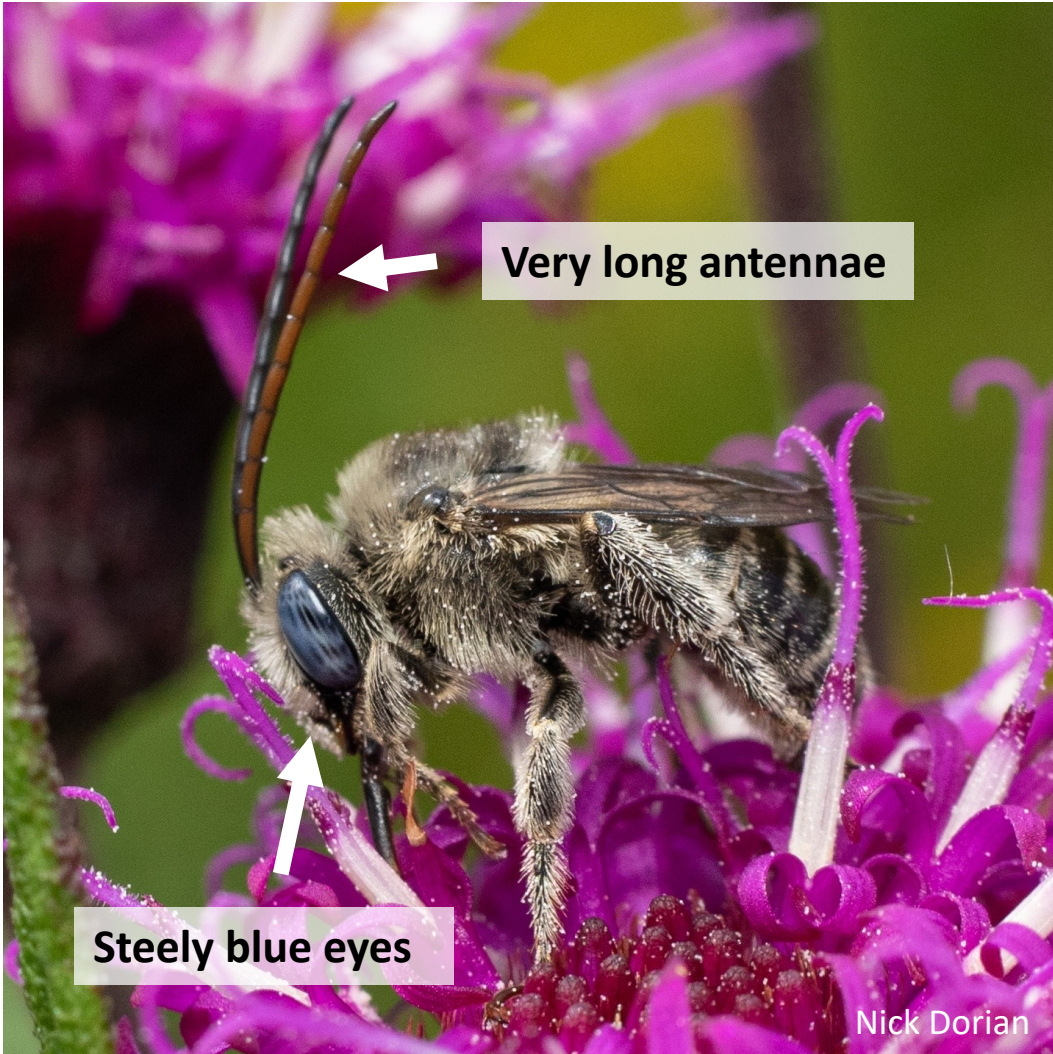
(*Melissodes denticulatus*)

- **Field ID tips:** 0.75x size of honey bee. Grayish body with steely blue eyes.
- **Favorite plant:** primarily **ironweed (*Vernonia*)**, occasionally other early-August Asteraceae like joe-pye weeds esp. for nectar
- **Flight season:** late-July through early-September
- **Nesting:** ground-nesting, possibly aggregates
- **Behavior:** Males patrol ironweed plants looking for mates, females forage vigorously on ironweed flowers collecting pollen into hind legs
- **Lookalikes:** few other longhorn bees are as gray and closely tied to ironweed as *M. denticulatus*

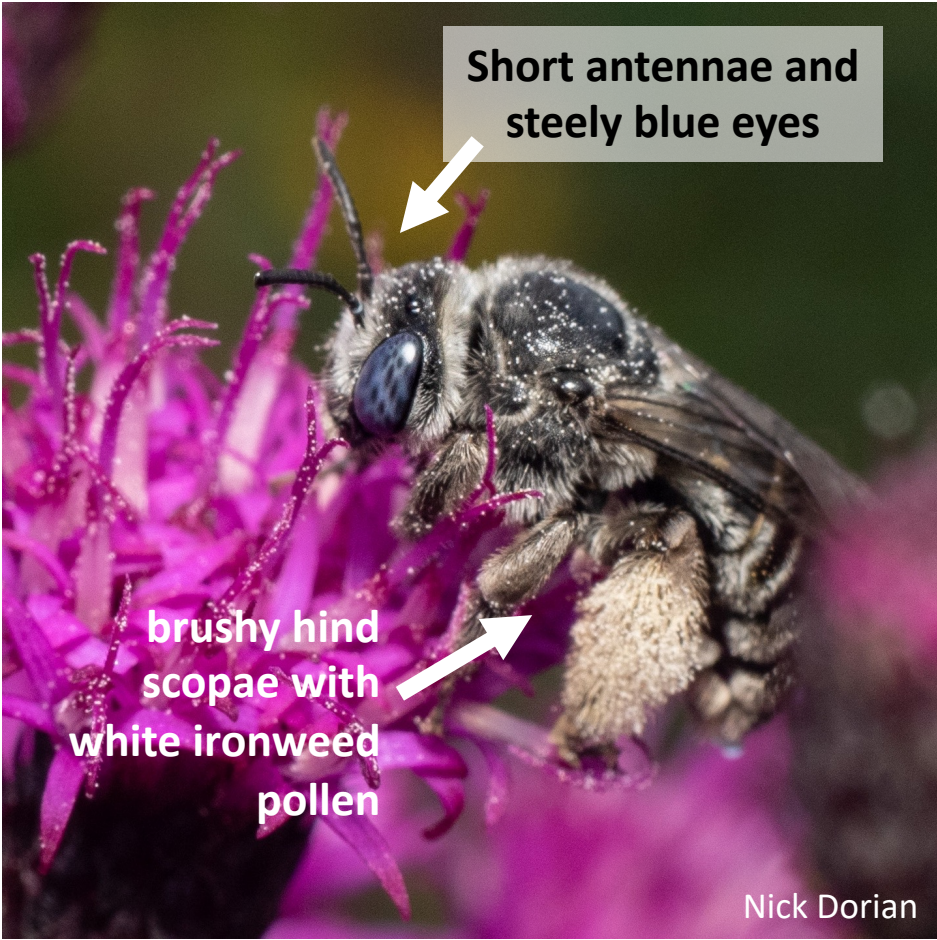


Nick Dorian

Males have very long antennae, and often don't stop for long on flowers. They patrol flowers looking for mates.



Females are more robust than males, and carry pollen in big brushy scopae on hind legs.



Melissodes denticulatus seems to be most abundant wherever its host plant ironweed (*Vernonia*) occurs in eastern North America, from wet meadows to city gardens.

